

Recombinant Human CD160 Protein, C-His-tagged

Cat. No. CD160-014H **Lot. No.** (See product label)

SPECIFICATION

Product Overview	Recombinant Human CD160 Protein with C-His tag was expressed in E. coli.
Species	Human
Source	E.coli
Description	CD160 antigen: receptor on immune cells capable to deliver stimulatory or inhibitory signals that regulate cell activation and differentiation. Exists as a GPI-anchored and as a transmembrane form, each likely initiating distinct signaling pathways via phosphoinositol 3-kinase in activated NK cells and via LCK and CD247/CD3 zeta chain in activated T cells.
Molecular Mass	~15 kDa
AA Sequence	GCINITSSASQEGTRLNLICTVWHKKEEAEGFVVFLCKDRSGDCSPETSLKQLRLKR DPGIDGVGEISSQLMFTISQVTPLHSGTYQCCARSQKSGIRLQGHFFSILFTETGNYT VTGLKQRQHLEFSHNEGTL
Purity	Transferred into competent cells and the supernatant was purified by NI column affinity chromatography and the purity is > 85% (by SDS-PAGE).
Notes	For research use only, not for use in diagnostic procedure.
Storage	Store at 4 centigrade short term. Aliquot and store at -20 centigrade long term. Avoid freeze-thaw cycles.

 Tel: 1-631-559-9269 1-516-512-3133

 Email: info@creative-biomart.com  Fax: 1-631-938-8127

 45-1 Ramsey Road, Shirley, NY 11967, USA

Concentration ≥0.5 mg/mL

Storage Buffer PBS, 4M Urea, pH7.4

GENE INFORMATION

Gene Name CD160 CD160 molecule [Homo sapiens (human)]

Official Symbol CD160

Synonyms CD160; CD160 molecule; CD160 antigen; BY55; NK1; NK28; CD160-delta Ig; CD160 transmembrane isoform; natural killer cell receptor BY55; natural killer cell receptor, immunoglobulin superfamily member; FLJ46513;

Gene ID 11126

mRNA Refseq NM_007053

Protein Refseq NP_008984

MIM 604463

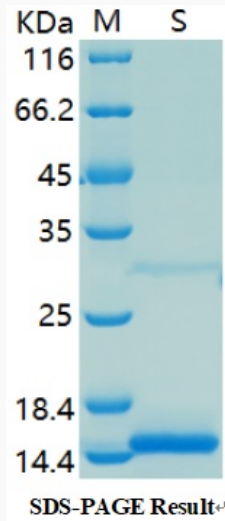
UniProt ID O95971

 Tel: 1-631-559-9269 1-516-512-3133

 Email: info@creative-biomart.com  Fax: 1-631-938-8127

 45-1 Ramsey Road, Shirley, NY 11967, USA

SDS-PAGE



 Tel: 1-631-559-9269 1-516-512-3133

 Email: info@creative-biomart.com  Fax: 1-631-938-8127

 45-1 Ramsey Road, Shirley, NY 11967, USA