

Recombinant Human CD160 Protein, GST-Tagged

Cat. No. CD160-0724H Lot. No. (See product label)

SPECIFICATION

Product Overview	Human CD160 full-length ORF (NP_008984.1, 1 a.a. - 181 a.a.) recombinant protein with GST-tag at N-terminal.
Species	Human
Source	Wheat Germ
Description	<p>CD160 is an 27 kDa glycoprotein which was initially identified with the monoclonal antibody BY55. Its expression is tightly associated with peripheral blood NK cells and CD 8 T lymphocytes with cytolytic effector activity. The cDNA sequence of CD160 predicts a cysteine-rich, glycosylphosphatidylinositol-anchored protein of 181 amino acids with a single Ig-like domain weakly homologous to KIR2DL4 molecule. CD160 is expressed at the cell surface as a tightly disulfide-linked multimer. RNA blot analysis revealed CD160 mRNAs of 1.5 and 1.6 kb whose expression was highly restricted to circulating NK and T cells, spleen and small intestine. Within NK cells CD160 is expressed by CD56dimCD16+ cells whereas among circulating T cells its expression is mainly restricted to TCRgd bearing cells and to TCRab+CD8brightCD95+CD56+CD28-CD27-cells. In tissues, CD160 is expressed on all intestinal intraepithelial lymphocytes. CD160 shows a broad specificity for binding to both classical and nonclassical MHC class I molecules. [provided by RefSeq, Jul 2008]</p>
Molecular Mass	46.2 kDa
AA Sequence	MLLEPGRGCCALAILLAIVDIQSGGCINITSSASQEGTRLNLICTVWHKKEEAEGFVVF

 Tel: 1-631-559-9269 1-516-512-3133

 Email: info@creative-biomart.com  Fax: 1-631-938-8127

 45-1 Ramsey Road, Shirley, NY 11967, USA



LCKDRSGDCSPETSLKQLRLKRDPGIDGVGEISSQLMFTISQVTPLHSGTYQCCARS
QKSGIRLQGHFFSILFTETGNYTVTGLKQRQHLEFSHNEGLSSGFLQEKVWVMLVT
SLVALQAL

Applications
Enzyme-linked Immunoabsorbent Assay
Western Blot (Recombinant protein)
Antibody Production
Protein Array

Storage Store at -80 centigrade. Aliquot to avoid repeated freezing and thawing.

Storage Buffer 50 mM Tris-HCl, 10 mM reduced Glutathione, pH=8.0 in the elution buffer.

GENE INFORMATION

Gene Name CD160 CD160 molecule [Homo sapiens]

Official Symbol CD160

Synonyms CD160; CD160 molecule; CD160 antigen; BY55; NK1; NK28; CD160-delta Ig; CD160 transmembrane isoform; natural killer cell receptor BY55; natural killer cell receptor, immunoglobulin superfamily member; FLJ46513;

Gene ID 11126

mRNA Refseq NM_007053

Protein Refseq NP_008984

MIM 604463

Tel: 1-631-559-9269 1-516-512-3133

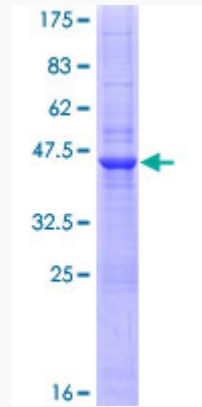
Email: info@creative-biomart.com Fax: 1-631-938-8127

45-1 Ramsey Road, Shirley, NY 11967, USA

UniProt ID

O95971

Quality Control
Testing



12.5% SDS-PAGE Stained with Coomassie Blue.

 Tel: 1-631-559-9269 1-516-512-3133

 Email: info@creative-biomart.com  Fax: 1-631-938-8127

 45-1 Ramsey Road, Shirley, NY 11967, USA