

Recombinant Human CD160 Protein (Met1-Leu158), C-His tagged

Cat. No. CD160-3961H Lot. No. (See product label)

SPECIFICATION

Product Overview	Recombinant human CD160 (Met1-Leu158) fused with the C-terminal His tag was expressed in Mammalian cells.
Species	Human
Source	Mammalian Cells
ProteinLength	Met1-Leu158
Form	Lyophilized powder/frozen liquid
Molecular Mass	17.38 kDa
Endotoxin	< 1.0 EU/μg of the protein as determined by the LAL method.
Purity	>90% as determined by SDS-PAGE.
Notes	For research use only.
Storage	Use a manual defrost freezer and avoid repeated freeze thaw cycles. Store at 2 to 8 centigrade for one week. Store at -20 to -80 centigrade for twelve months from the date of receipt.
Storage Buffer	Supplied as solution form in PBS or lyophilized from PBS.

 Tel: 1-631-559-9269 1-516-512-3133

 Email: info@creative-biomart.com  Fax: 1-631-938-8127

 45-1 Ramsey Road, Shirley, NY 11967, USA

Reconstitution Reconstitute in sterile water for a stock solution.

Shipping They are shipped out with dry ice/blue ice unless customers require otherwise.

GENE INFORMATION

Gene Name CD160 CD160 molecule [Homo sapiens (human)]

Official Symbol CD160

Synonyms CD160; CD160 molecule; CD160 antigen; BY55; NK1; NK28; CD160-delta Ig; CD160 transmembrane isoform; natural killer cell receptor BY55; natural killer cell receptor, immunoglobulin superfamily member; FLJ46513;

Gene ID 11126

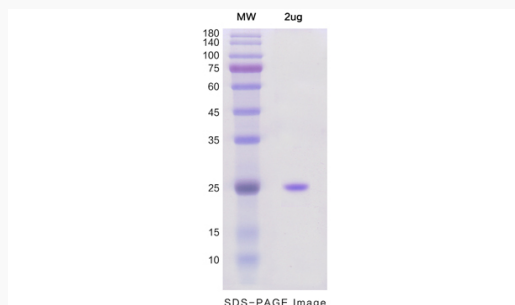
mRNA Refseq NM_007053

Protein Refseq NP_008984

MIM 604463

UniProt ID O95971

SDS-PAGE



 Tel: 1-631-559-9269 1-516-512-3133

 Email: info@creative-biomart.com  Fax: 1-631-938-8127

 45-1 Ramsey Road, Shirley, NY 11967, USA