

Recombinant Human CD160 protein, His-Avi-tagged

Cat. No. CD160-971H **Lot. No.** (See product label)

SPECIFICATION

Product Overview	Recombinant Human CD160 protein(O95971)(Gly25-Leu158), fused with C-terminal His and Avi tag, was expressed in HEK293.
Species	Human
Source	HEK293
ProteinLength	Gly25-Leu158
Tag	C-His-Avi
Form	Lyophilized from 0.22µm filtered solution in PBS (pH 7.4). Normally 5% trehalose is added as protectant before lyophilization.
Bio-activity	Human HVEM, hFc Tag captured on CM5 Chip via Protein A can bind Human CD160, His Tag with an affinity constant of 1.44 µM as determined in SPR assay (Biacore T200).
Molecular Mass	The protein has a predicted MW of 17.7 kDa. Due to glycosylation, the protein migrates to 27-33 kDa based on Tris-Bis PAGE result.
Endotoxin	Less than 1EU per µg by the LAL method.
Purity	> 95% as determined by Tris-Bis PAGE; > 95% as determined by HPLC

 Tel: 1-631-559-9269 1-516-512-3133

 Email: info@creative-biomart.com  Fax: 1-631-938-8127

 45-1 Ramsey Road, Shirley, NY 11967, USA

Storage Reconstituted protein stable at -80°C for 12 months, 4°C for 1 week. Use a manual defrost freezer and avoid repeated freeze-thaw cycles.

Reconstitution Centrifuge tubes before opening. Reconstituting to a concentration more than 100 µg/ml is recommended. Dissolve the lyophilized protein in distilled water.

GENE INFORMATION

Gene Name [CD160 CD160 molecule \[Homo sapiens \]](#)

Official Symbol [CD160](#)

Synonyms CD160; CD160 molecule; CD160 antigen; BY55; NK1; NK28; CD160-delta Ig; CD160 transmembrane isoform; natural killer cell receptor BY55; natural killer cell receptor, immunoglobulin superfamily member; FLJ46513;

Gene ID [11126](#)

mRNA Refseq [NM_007053](#)

Protein Refseq [NP_008984](#)

MIM [604463](#)

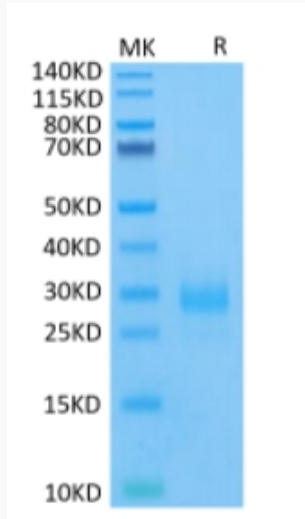
UniProt ID [O95971](#)

 Tel: 1-631-559-9269 1-516-512-3133

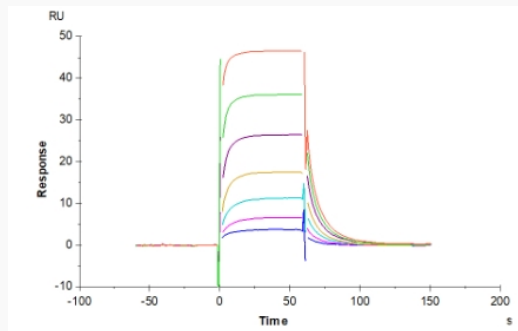
 Email: info@creative-biomart.com  Fax: 1-631-938-8127

 45-1 Ramsey Road, Shirley, NY 11967, USA

Tris-Bis PAGE



SPR Data



 Tel: 1-631-559-9269 1-516-512-3133

 Email: info@creative-biomart.com  Fax: 1-631-938-8127

 45-1 Ramsey Road, Shirley, NY 11967, USA