

Recombinant Full Length Human CD163 Protein, C-Flag-tagged

Cat. No. CD163-1463HFL **Lot. No.** (See product label)

SPECIFICATION

Product Overview	Recombinant Full Length Human CD163 Protein, fused to Flag-tag at C-terminus, was expressed in Mammalian cells.
Species	Human
Source	Mammalian Cells
Description	The protein encoded by this gene is a member of the scavenger receptor cysteine-rich (SRCR) superfamily, and is exclusively expressed in monocytes and macrophages. It functions as an acute phase-regulated receptor involved in the clearance and endocytosis of hemoglobin/haptoglobin complexes by macrophages, and may thereby protect tissues from free hemoglobin-mediated oxidative damage. This protein may also function as an innate immune sensor for bacteria and inducer of local inflammation. Alternatively spliced transcript variants encoding different isoforms have been described for this gene.
Form	25 mM Tris HCl, pH 7.3, 100 mM glycine, 10% glycerol.
Molecular Mass	125.3 kDa
AA Sequence	MSKLRMVLLLEDSGSADFRRHFVNLSPTITVLLLLSACFVTSSLGGTDKELRLVDGE NKCSGRVEVKVQ EEWGTVCNNGWSMEAVSVICNQLGCPTAIKAPGWANSSAGSG RIWMDHVSCRGNESALWDCKHDGWGKH SNCTHQQDAGVTCSDGSNLEMRLTRG GNMCSGRIEIKFQGRWGTVCDDNFNIDHASVICRQLECGSAVS FSGSSNFGEGSG

 Tel: 1-631-559-9269 1-516-512-3133

 Email: info@creative-biomart.com  Fax: 1-631-938-8127

 45-1 Ramsey Road, Shirley, NY 11967, USA

PIWFDDLICNGNESALWNCKHQGWGKHNCDDHAEDAGVICSKGADLSLRLVDGVTE
 CS GRLEVRFQGEWGTICDDGWDSYDAAVACKQLGCPTAVTAIGRVNASKGFGHIW
 LDSVSCQGHEPAVWQC KHHEWKGKHYCNHNEDAGVTCSDGSDLELRLRGGGSRG
 AGTVEVEIQRLGKVCDRGWGLKEADVCRQL GCGSALKTSYQVYSKIQATNTWL
 FLSSCNGNETSLWDCKNWQWGGLTCDHYEEAKITCSAHREPRVGG DIPCSGRVE
 VKHGDTWGSICDSDFSLEAASVLCRELQCGTVVSILGGAHFGEENGQIWAEEFQCE
 GHES HLSLCPVAPRPEGTCSHSRDVGVVCSRYTEIRLVNGKTPCEGRVELKTLGA
 WGS LCNSHWDIEDAHVLC QQLKCGVALSTPGGARFGKNGQIWRHMFHCTGTEQ
 HMGDCPVTALGASLCPSEQVASVICSGNQSQTL SSCNSSSLGPTRPTIPEESAVACI
 ESGQLRLVNGGGRCAGRVEIYHEGSWGTICDDSWDLSDAHVVCRQ LGCGEAINAT
 GSAHFGE GTGPIWLDEM KCNGKESRIWQCHSHGWGQQNCRHKEDAGVICSEFMS
 LRLTS EASREACAGRLEVFYNGAWGTVGKSSMSETTVGVVCRQLGCADK GKINPA
 SLDKAMSIPMWVDNVQCPK GPDTLWQCPSSPWEKRLASPSEETWITCDNKIRLQE
 GPTSCSGRVEIWHGGSWGTVCDSDWDLDDAQVV CQQLGCGPALKAFKEAEFGQ
 GTGPIWLNEVKCKGNESSLWDCPARRWGHSECGHKEDA AVNCTDISVQK TPQKA
 TTGRSSRQSSFIAVGILGVVLLAIFVALFFLT KKRRRQRQLAVSSRGENLVHQIQYRE
 MNSCLN
 ADDLDMNSSENSHESADFSAAELISVSKFLPISGMEKEAILSHTEKENGLSGPTRT
 RPLEQKLISEEDLAANDILDYKDDDDKV

Purity	> 80% as determined by SDS-PAGE and Coomassie blue staining.
Stability	Stable for 12 months from the date of receipt of the product under proper storage and handling conditions. Avoid repeated freeze-thaw cycles.
Storage	Store at -80 centigrade.
Concentration	>50 ug/mL as determined by microplate BCA method.
Preparation	Recombinant protein was captured through anti-DDK affinity column followed by

 Tel: 1-631-559-9269 1-516-512-3133

 Email: info@creative-biomart.com  Fax: 1-631-938-8127

 45-1 Ramsey Road, Shirley, NY 11967, USA

conventional chromatography steps.

Protein Families Druggable Genome, Secreted Protein, Transmembrane

Full Length Full L.

GENE INFORMATION

Gene Name CD163 CD163 molecule [Homo sapiens (human)]

Official Symbol CD163

Synonyms M130; MM130; SCARI1

Gene ID 9332

mRNA Refseq NM_004244.6

Protein Refseq NP_004235.4

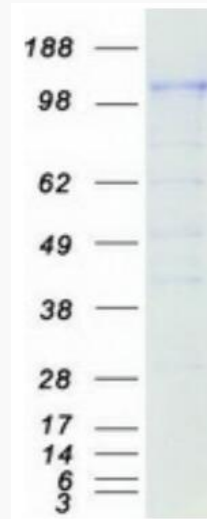
MIM 605545

UniProt ID Q86VB7

 Tel: 1-631-559-9269 1-516-512-3133

 Email: info@creative-biomart.com  Fax: 1-631-938-8127

 45-1 Ramsey Road, Shirley, NY 11967, USA



Coomassie blue staining of purified CD163 protein.

 Tel: 1-631-559-9269 1-516-512-3133

 Email: info@creative-biomart.com  Fax: 1-631-938-8127

 45-1 Ramsey Road, Shirley, NY 11967, USA