

## Recombinant Human CD163 Protein, C-His-tagged

**Cat. No.** CD163-182H    **Lot. No.** (See product label)

### SPECIFICATION

|                         |  |
|-------------------------|--|
| <b>Product Overview</b> | Recombinant Human CD163 Protein with C-His tag was expressed in E. coli.   |
| <b>Species</b>          | Human  |
| <b>Source</b>           | E.coli   |
| <b>Description</b>      | <p>CD163 is a transmembrane scavenger receptor expressed on the macrophage surface. It has 9 B-type SRCR extracellular domains mediating serum haptoglobin clearing/endocytosis, pathogen binding and signal transduction, and calcium binding. CD163 is used as a surface marker of M2 type macrophages, including M2 type tumor associated macrophages (TAMs), which facilitate cancer progression by secreting cytokines to promote angiogenesis, immunosuppression and metastasis. Inflammatory stimulation and stress signal can induce extracellular domain shedding of CD163 to generate soluble CD163 (sCD163). The increased sCD163 level in serum is associated with low-grade inflammation in disease conditions.</p> |
| <b>Molecular Mass</b>   | ~89 kDa  |
| <b>AA Sequence</b>      | <pre> SSLGGTDKELRLVDGENKCSGRVEVKVQEEWGTVCNNGWSMEAVSVICNQLGCP TAIKAPGWANSSAGSGRIWMDHVSCRGNESALWDCKHDGWGKHSNCTHQQDAG VTCSDGSNLEMRLTRGGNMCSGRIEIKFQGRWGTVCDDNFNIDHASVICRQLECGS AVSFGSSNFGEGSGPIWFDDLICNGNESALWNCKHQGWGKHNCDAEDAGVICS KGADLSLRLVDGVTECSGRLEVRFQGEWGTICDDGWDSYDAAVACKQLGCPTAVT AIGRVNASKGFGHIWLDSVSCQGHEPAIWQCKHHEWKGKHYCNHNEDAGVTCSDG                     </pre>   |

 Tel: 1-631-559-9269    1-516-512-3133

 Email: [info@creative-biomart.com](mailto:info@creative-biomart.com)     Fax: 1-631-938-8127

 45-1 Ramsey Road, Shirley, NY 11967, USA

SDLELRLRGGGSRCA GTVEVEIQRL LGKVC DRGWGLKEADV VCRQLGCGSALKTS  
 YQVYSKI QATNTWFLSSCNGNETSLWDCKNWQWGGLTCDHYEEAKITCSAHREP  
 RLVGGDIPCSGRVEVKHGDTWGSICDSDFSLEAASVLCRELQCGTVVSILGGAHFG  
 EGNQIWAEEFQCEGHESHLSLCPVAPRPEGTCSHSRDVGVVCSRYTEIRLVNGKT  
 PCEGRVELKTLGAWGSLCNSHWDIEDAHVLCQQLKCGVALSTPGGARFGKNGNQI  
 WRHMFHCTGTEQHMGDPCV TALGASLCPSEQVASVICSGNQSQTLSSCNSSSLGP  
 TRPTIPEESAVACIESGQLRLVNGGGRCAGRVEIYHEGSWGTICDDSWDLSDAHVV  
 CRQLGCGEAINATGSAHFGEGTGPIWLDEM KCNGKESRIWQCHSHGWGQQNCRH  
 KEDAGVICSEFMSLRLTSEASREACAGRLEVFYNGAWGTV

**Purity**

Transferred into competent cells and the supernatant was purified by NI column affinity chromatography and the purity is > 85% (by SDS-PAGE).

**Notes**

For research use only, not for use in diagnostic procedure.

**Storage**

Store at 4 centigrade short term. Aliquot and store at -20 centigrade long term. Avoid freeze-thaw cycles.

**Concentration**

≥0.5 mg/mL

**Storage Buffer**

PBS, 4M Urea, pH7.4

## GENE INFORMATION

**Gene Name**

CD163 CD163 molecule [ Homo sapiens (human) ]

**Official Symbol**

CD163

**Synonyms**

CD163; CD163 molecule; CD163 antigen; scavenger receptor cysteine-rich type 1 protein M130; M130; MM130; hemoglobin scavenger receptor; macrophage-associated antigen;

 Tel: 1-631-559-9269 1-516-512-3133

 Email: [info@creative-biomart.com](mailto:info@creative-biomart.com)  Fax: 1-631-938-8127

 45-1 Ramsey Road, Shirley, NY 11967, USA

**Gene ID** 9332

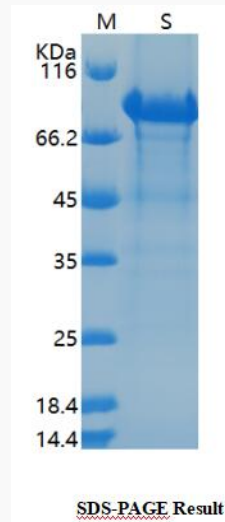
**mRNA Refseq** NM\_004244

**Protein Refseq** NP\_004235

**MIM** 605545

**UniProt ID** Q86VB7

**SDS-PAGE**



 Tel: 1-631-559-9269 1-516-512-3133

 Email: [info@creative-biomart.com](mailto:info@creative-biomart.com)  Fax: 1-631-938-8127

 45-1 Ramsey Road, Shirley, NY 11967, USA