

Active Recombinant Human CD19 Protein, Fc-tagged, Alexa Fluor® 647 conjugated

Cat. No. CD19-06H Lot. No. (See product label)

SPECIFICATION

Product Overview	Recombinant human Alexa Fluor® 647 conjugated CD19 (Glu21-Lys291) protein with a human IgG1 (Pro100-Lys330) Fc tag at C-terminus was expressed in chinese hamster ovary cell line.
Species	Human
Source	CHO
ProteinLength	21-291 a.a.
Description	This gene encodes a member of the immunoglobulin gene superfamily. Expression of this cell surface protein is restricted to B cell lymphocytes. This protein is a reliable marker for pre-B cells but its expression diminishes during terminal B cell differentiation in antibody secreting plasma cells. The protein has two N-terminal extracellular Ig-like domains separated by a non-Ig-like domain, a hydrophobic transmembrane domain, and a large C-terminal cytoplasmic domain. This protein forms a complex with several membrane proteins including complement receptor type 2 (CD21) and tetraspanin (CD81) and this complex reduces the threshold for antigen-initiated B cell activation. Activation of this B-cell antigen receptor complex activates the phosphatidylinositol 3-kinase signalling pathway and the subsequent release of intracellular stores of calcium ions. This protein is a target of chimeric antigen receptor (CAR) T-cells used in the treatment of lymphoblastic leukemia. Mutations in this gene are associated with the disease common variable immunodeficiency 3

 Tel: 1-631-559-9269 1-516-512-3133

 Email: info@creative-biomart.com  Fax: 1-631-938-8127

 45-1 Ramsey Road, Shirley, NY 11967, USA

(CVID3) which results in a failure of B-cell differentiation and impaired secretion of immunoglobulins. CVID3 is characterized by hypogammaglobulinemia, an inability to mount an antibody response to antigen, and recurrent bacterial infections. Alternative splicing results in multiple transcript variants encoding distinct isoforms.

Form	<p>Disulfide-linked homodimer</p> <p>Labeled with Alexa Fluor® 647</p> <p>Excitation Wavelength: 650 nm</p> <p>Emission Wavelength: 668 nm</p>
Bio-activity	<p>Measured by flow cytometry for its ability to bind anti-Human CD19 Monoclonal Antibody conjugated beads. The concentration of Recombinant Human CD19 FcChimera Alexa Fluor® 647 that produces 50% of the binding is 10.0-100 ng/mL.</p>
Molecular Mass	57 kDa
N-terminal Sequence Analysis	Glu21
Endotoxin	<1.0 EU/µg of the protein by the LAL method.
Purity	>90%, by SDS-PAGE visualized with Silver Staining and quantitative densitometry by Coomassie® Blue Staining.
Storage	<p>Protect from light. Use a manual defrost freezer and avoid repeated freeze-thaw cycles.</p> <p>6 months from date of receipt, -20 to -70 centigrade as supplied.</p> <p>1 month, 2 to 8 centigrade under sterile conditions after opening.</p> <p>3 months, -20 to -70 centigrade under sterile conditions after opening.</p>
Storage Buffer	Supplied as a 0.2 µm filtered solution in PBS with BSA as a carrier protein.

 Tel: 1-631-559-9269 1-516-512-3133

 Email: info@creative-biomart.com  Fax: 1-631-938-8127

 45-1 Ramsey Road, Shirley, NY 11967, USA

Shipping The product is shipped with dry ice or equivalent.

Conjugation Alexa Fluor 647

GENE INFORMATION

Gene Name CD19 CD19 molecule [Homo sapiens (human)]

Official Symbol CD19

Synonyms CD19; CD19 molecule; B4; CVID3; B-lymphocyte antigen CD19; B-lymphocyte surface antigen B4; T-cell surface antigen Leu-12; differentiation antigen CD19

Gene ID 930

mRNA Refseq NM_001770

Protein Refseq NP_001761

MIM 107265

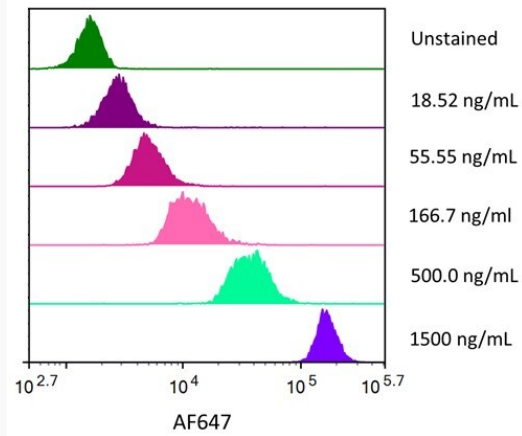
UniProt ID P15391

 Tel: 1-631-559-9269 1-516-512-3133

 Email: info@creative-biomart.com  Fax: 1-631-938-8127

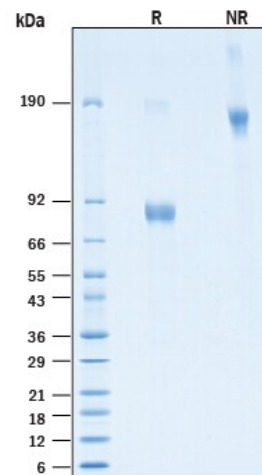
 45-1 Ramsey Road, Shirley, NY 11967, USA

FC



Streptavidin coated beads conjugated to biotinylated anti-Human CD19 Monoclonal Antibody were stained with the indicated concentrations of Recombinant Human CD19 Fc Chimera Alexa Fluor® 647.

SDS-PAGE



2 µg/lane of Recombinant Human CD19 Fc Chimera Alexa Fluor® 647 Protein was resolved with SDS-PAGE under reducing (R) and non-reducing (NR) conditions and


Tel: 1-631-559-9269 1-516-512-3133

Email: info@creative-biomart.com Fax: 1-631-938-8127

45-1 Ramsey Road, Shirley, NY 11967, USA



visualized by Coomassie® Blue staining, showing bands at 77-92 kDa and 150-180 kDa, respectively.

 Tel: 1-631-559-9269 1-516-512-3133

 Email: info@creative-biomart.com  Fax: 1-631-938-8127

 45-1 Ramsey Road, Shirley, NY 11967, USA