

## Spleen CD19 protein-coupled magnetic MicroBeads

Cat. No. CD19-2913M Lot. No. (See product label)

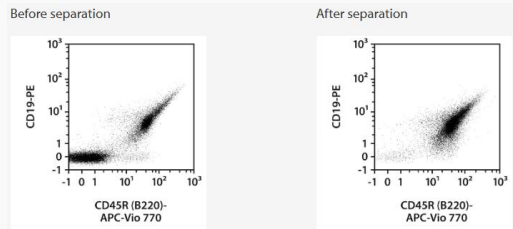
### SPECIFICATION

**Species** Mouse

**Capacity** for 40 spleens


**Background**

The StraightFrom Spleen CD19 MicroBead Kit, mouse has been developed for the positive selection of CD19+ cells directly from mouse spleen by using the gentleMACS Dissociators in combination with enzymatic digestion and MACS Technology.




**Analysis**

Separation of a spleen sample using the StraightFrom Spleen CD19 MicroBead Kit, mouse and the autoMACS NEO Separator. Cells were fluorescently stained with CD19-PE and CD45R (B220)-APC-Vio 770 and analyzed by flow cytometry using the MACSQuant Analyzer. Cell debris and dead cells were excluded from the analysis based on scatter signals and 7-AAD fluorescence.

 Tel: 1-631-559-9269 1-516-512-3133

 Email: [info@creative-biomart.com](mailto:info@creative-biomart.com)  Fax: 1-631-938-8127

 45-1 Ramsey Road, Shirley, NY 11967, USA