

Recombinant Human CD19 protein, His-tagged, FITC-labelled

Cat. No. CD19-3211H **Lot. No.** (See product label)

SPECIFICATION

Product Overview	FITC-labelled Recombinant Human CD19 protein(P15391-1)(Pro20-Lys291), fused with C-terminal His tag, was expressed in HEK293.
Species	Human
Source	HEK293
ProteinLength	Pro20-Lys291
Tag	C-His
Conjugation/Label	FITC
Form	Supplied as 0.22µm filtered solution in PBS (pH 7.4).
Bio-activity	Use 100 µl FITC-Compatible Human CD19 (10 µg/ml) to detect the positive rate of 110 ⁶ anti-CD19 CAR cells and FITC-labeled irrelevant protein (100 µl, 10 µg/ml) was served as a negative control.
Molecular Mass	The protein has a predicted MW of 60.1 kDa. Due to glycosylation, the protein migrates to 68-72 kDa based on Tris-Bis PAGE result.
Endotoxin	Less than 1EU per µg by the LAL method.
Purity	> 95% as determined by Tris-Bis PAGE; > 95% as determined by HPLC

 Tel: 1-631-559-9269 1-516-512-3133

 Email: info@creative-biomart.com  Fax: 1-631-938-8127

 45-1 Ramsey Road, Shirley, NY 11967, USA

Storage	Valid for 12 months from date of receipt when stored at -80°C; Recommend to aliquot the protein into smaller quantities for optimal storage. Please do not repeated freeze-thaw cycles.
Reconstitution	It is recommended that sterile water be added to the vial to prepare a stock solution of 0.2 ug/ul. Centrifuge the vial at 4°C before opening to recover the entire contents.
Conjugation	FITC

GENE INFORMATION

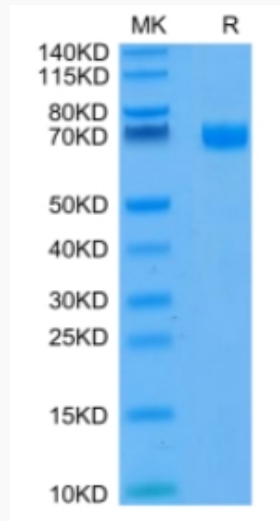
Gene Name	CD19 CD19 molecule [Homo sapiens]
Official Symbol	CD19
Synonyms	CD19; CD19 molecule; CD19 antigen; B-lymphocyte antigen CD19; differentiation antigen CD19; T-cell surface antigen Leu-12; B-lymphocyte surface antigen B4; B4; CVID3; MGC12802;
Gene ID	930
mRNA Refseq	NM_001178098
Protein Refseq	NP_001171569
MIM	107265
UniProt ID	P15391

 Tel: 1-631-559-9269 1-516-512-3133

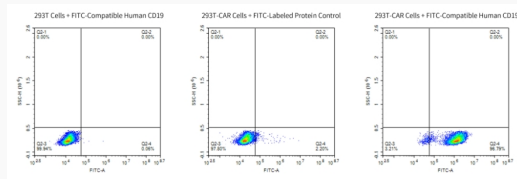
 Email: info@creative-biomart.com  Fax: 1-631-938-8127

 45-1 Ramsey Road, Shirley, NY 11967, USA

Tris-Bis PAGE



FACS Data



 Tel: 1-631-559-9269 1-516-512-3133

 Email: info@creative-biomart.com  Fax: 1-631-938-8127

 45-1 Ramsey Road, Shirley, NY 11967, USA