

LRSC CD19 protein-coupled magnetic MicroBeads

Cat. No. CD19-5749M Lot. No. (See product label)

SPECIFICATION

Species Human

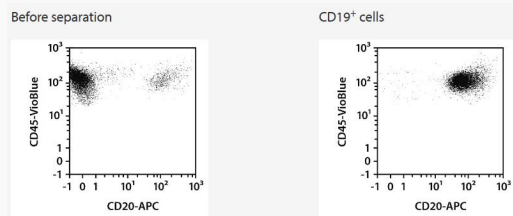
Capacity for 1 LRSC

Background

The CD19 antigen is expressed from the early pro-B cell to the B cell blast stage. It is also present on most malignant B cells. CD19 expression is down-regulated upon terminal differentiation of B cells to plasma cells.

Application

The purified CD19+ cells are well suited for further flow cytometric, functional, or molecular analysis.



Analysis

Separation of an LRSC sample using the StraightFrom LRSC CD19 MicroBead Kit and the MultiMACS Cell24 Separator Plus with the Single-Column Adapter and LS Columns. Cells were fluorescently stained with CD20-APC as well as CD45-VioBlue and analyzed by flow cytometry using the MACSQuant Analyzer. Cell debris and dead cells were excluded from the analysis based on scatter signals and propidium iodide fluorescence.

 Tel: 1-631-559-9269 1-516-512-3133

 Email: info@creative-biomart.com  Fax: 1-631-938-8127

 45-1 Ramsey Road, Shirley, NY 11967, USA