

Whole Blood CD19 protein-coupled magnetic MicroBeads

Cat. No. CD19-8686M **Lot. No.** (See product label)

SPECIFICATION

Species Human

Capacity for 40 mL whole blood

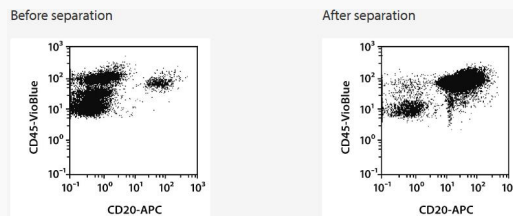
Background

The CD19 antigen is expressed from the early pro-B cell to the B cell blast stage. It is also present on most malignant B cells. CD19 expression is down-regulated upon terminal differentiation of B cells to plasma cells.

Application

The purified CD19+ cells are well suited for flow cytometric, functional, or molecular analysis including lineage-specific chimerism analysis after allogeneic stem cell transplantation.

Analysis



Separation of a whole blood sample using the StraightFrom Whole Blood CD19 MicroBeads and the MultiMACS Cell24 Separator Plus with the Single-Column Adapter and Whole Blood Columns without washing step after labeling. Cells were fluorescently stained with CD20-APC as well as CD45-VioBlue and analyzed by flow cytometry using the MACSQuant Analyzer. Cells were triggered via CD45-VioBlue, cell debris and dead cells were excluded from the analysis based on

 Tel: 1-631-559-9269 1-516-512-3133

 Email: info@creative-biomart.com  Fax: 1-631-938-8127

 45-1 Ramsey Road, Shirley, NY 11967, USA



scatter signals and propidium iodide fluorescence.

 Tel: 1-631-559-9269 1-516-512-3133

 Email: info@creative-biomart.com  Fax: 1-631-938-8127

 45-1 Ramsey Road, Shirley, NY 11967, USA