

Recombinant Human CD1A protein, His-tagged

Cat. No. CD1A-152H Lot. No. (See product label)

SPECIFICATION

Product Overview	Recombinant Human CD1A protein(NP_001754.2)(Asp19-Val300) is expressed from Expi293 with His tag at the C-terminal.
Species	Human
Source	HEK293
ProteinLength	Asp19-Val300
Form	Supplied as 0.22µm filtered solution in PBS (pH 7.4). Please dilute to the desired concentration according to the concentration of the solution shown on the product label.
Molecular Mass	The protein has a predicted MW of 33.3 kDa. Due to glycosylation, the protein migrates to 48-53 kDa and 13-14 kDa based on Tris-Bis PAGE result.
Endotoxin	Less than 1.0 EU per µg by the LAL method.
Purity	> 95% as determined by Tris-Bis PAGE > 95% as determined by HPLC
Storage	Valid for 12 months from date of receipt when stored at -80°C. Recommend to aliquot the protein into smaller quantities for optimal storage. Please do not repeated freeze-thaw cycles.

 Tel: 1-631-559-9269 1-516-512-3133

 Email: info@creative-biomart.com  Fax: 1-631-938-8127

 45-1 Ramsey Road, Shirley, NY 11967, USA



Reconstitution It is recommended that sterile water be added to the vial to prepare a stock solution of 0.2 ug/ul. Centrifuge the vial at 4°C before opening to recover the entire contents.

GENE INFORMATION

Gene Name CD1A CD1a molecule [Homo sapiens]

Official Symbol CD1A

Synonyms CD1; FCB6; HTA1; R4; T6

Gene ID 909

mRNA Refseq NM_001763

Protein Refseq NP_001754

MIM 188370

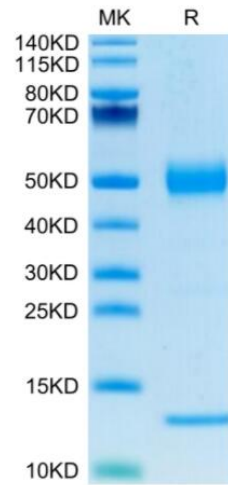
UniProt ID P06126

 Tel: 1-631-559-9269 1-516-512-3133

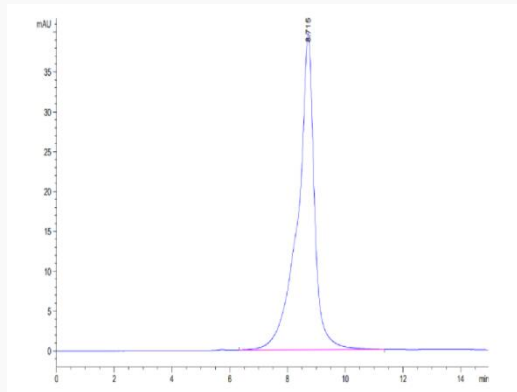
 Email: info@creative-biomart.com  Fax: 1-631-938-8127

 45-1 Ramsey Road, Shirley, NY 11967, USA

Tris-Bis PAGE



SEC-HPLC



 Tel: 1-631-559-9269 1-516-512-3133

 Email: info@creative-biomart.com  Fax: 1-631-938-8127

 45-1 Ramsey Road, Shirley, NY 11967, USA