

Recombinant Human CD1A Protein, C-His-tagged

Cat. No. CD1A-163H **Lot. No.** (See product label)

SPECIFICATION

Product Overview	Recombinant Human CD1A Protein with C-His tag was expressed in E. coli.
Species	Human
Source	E.coli
Description	<p>The CD1 multigene family encodes five forms of the CD1 T-cell surface glycoprotein in human, designated CD1A, 1B, 1C, 1D and 1E. CD1, a type 1 membrane protein, has structural similarity to the MHC class I antigen and has been shown to present lipid antigens for recognition by T lymphocytes. CD1 antigens are associated with b-2-Microglobulin and expressed on cortical thymocytes, Langerhans cells, a B cell subset and some dendritic cells. Specifically, CD1A is a marker for Langerhans cell histiocytosis (LCH) and is found on interdigitating cells. Adaptor-protein complexes and CD1-associated chaperones control CD1 trafficking, and the development and activation of CD1-restricted T cells. Constitutive endocytosis of CD1B molecules and the differential sorting of MHC class II from lysosomes separate peptide- and lipid antigen-presenting molecules during dendritic cell maturation. CD1B is also expressed in interdigitating cells. The human CD1 genes are all closely linked in a cluster mapping at chromosome 1q23.1.</p>
Molecular Mass	~31 kDa
AA Sequence	NADGLKEPLSFHVTWIASFYNSHWKQNLVSGWLSDLQHTWDSNSSTIVFLCPWSR GNFSNEEWKELETLFRIRTIRSFEGIRRYAHELQFEYPFEIQVTGGCELHSGKVSQSF

 Tel: 1-631-559-9269 1-516-512-3133

 Email: info@creative-biomart.com  Fax: 1-631-938-8127

 45-1 Ramsey Road, Shirley, NY 11967, USA

LQLAYQGSDVFSFQNNSWLPYPVAGNMAKHFCVKVLNQNQHENDITHNLLSDTCPR
 FILGLLDAGKAHLQRQVKPEAWLSHGSPGPGHLQLVCHVSGFYPKPVWVMWMR
 GEQEQQGTQRGDILPSADGTWYLRATLEVAAGEAADLSCRVKHSSLEGQDIVLYWE
 HHSSV

Purity

Transferred into competent cells and the supernatant was purified by NI column affinity chromatography and the purity is > 85% (by SDS-PAGE).

Notes

For research use only, not for use in diagnostic procedure.

Storage

Store at 4 centigrade short term. Aliquot and store at -20 centigrade long term. Avoid freeze-thaw cycles.

Concentration

≥0.5 mg/mL

Storage Buffer

PBS, 4M Urea, pH7.4

GENE INFORMATION

Gene Name

CD1A CD1a molecule [*Homo sapiens* (human)]

Official Symbol

CD1A

Synonyms

CD1A; CD1a molecule; CD1, CD1a antigen , CD1A antigen, a polypeptide; T-cell surface glycoprotein CD1a; hTa1 thymocyte antigen; CD1A antigen, a polypeptide; cluster of differentiation 1 A; T-cell surface antigen T6/Leu-6; cortical thymocyte antigen CD1A; differentiation antigen CD1-alpha-3; epidermal dendritic cell marker CD1a; R4; T6; CD1; FCB6; HTA1;

Gene ID

909

 Tel: 1-631-559-9269 1-516-512-3133

 Email: info@creative-biomart.com  Fax: 1-631-938-8127

 45-1 Ramsey Road, Shirley, NY 11967, USA

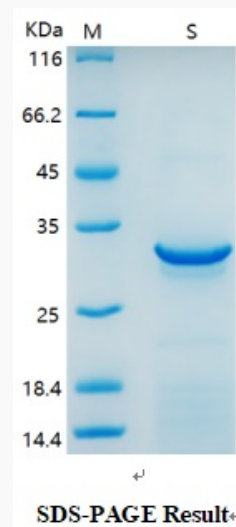
mRNA Refseq [NM_001763](#)

Protein Refseq [NP_001754](#)

MIM [188370](#)

UniProt ID [P06126](#)

SDS-PAGE



 Tel: 1-631-559-9269 1-516-512-3133

 Email: info@creative-biomart.com  Fax: 1-631-938-8127

 45-1 Ramsey Road, Shirley, NY 11967, USA