

Recombinant Human CD1A protein, GST-tagged

Cat. No. CD1A-27866TH **Lot. No.** (See product label)

SPECIFICATION

Product Overview	Recombinant Human CD1A(1 a.a. - 311 a.a.) fused with GST tag at N-terminal was expressed in Wheat Germ.
Species	Human
Source	Wheat Germ
ProteinLength	1-311 a.a.
Description	This gene encodes a member of the CD1 family of transmembrane glycoproteins, which are structurally related to the major histocompatibility complex (MHC) proteins and form heterodimers with beta-2-microglobulin. The CD1 proteins mediate the presentation of primarily lipid and glycolipid antigens of self or microbial origin to T cells. The human genome contains five CD1 family genes organized in a cluster on chromosome 1. The CD1 family members are thought to differ in their cellular localization and specificity for particular lipid ligands. The protein encoded by this gene localizes to the plasma membrane and to recycling vesicles of the early endocytic system. Alternative splicing results in multiple transcript variants.
Form	50 mM Tris-HCl, 10 mM reduced Glutathione, pH=8.0 in the elution buffer.
Molecular Mass	59.95 kDa
AA Sequence	MWNWLKEPLSFHVIWIASFYNHWSWKQNLVSGWLSDLQHTHTWDSNSSTIVFLWPWS RGNFSNEEWKELETFRIRTIRSFEGIRRYAHELQFEYPFEIQVTGGCELHSGKVS

 Tel: 1-631-559-9269 1-516-512-3133

 Email: info@creative-biomart.com  Fax: 1-631-938-8127

 45-1 Ramsey Road, Shirley, NY 11967, USA



FLQLAYQGSDFVSFQNNSWLPYPVAGNMAKHFCKVLNQNQHENDITHNLLSDTCP
RFILGLLDAGKAHLQRQVKPEAWLSHGPPGPHLQLVCHVSGFYKPKVWVMWM
RGEQEQQGTQRGDILPSADGTWYLRATLEVAAGEAADLSCRVKHSSLEGQDIVLY
WEHSSVGFILAVIVPLLLLIGLALWFRKRCFC

Applications Enzyme-linked Immunoabsorbent Assay; Western Blot (Recombinant protein);
Antibody Production; Protein Array

Notes Best use within three months from the date of receipt of this protein.

Storage Store at -80 centigrade. Aliquot to avoid repeated freezing and thawing.

GENE INFORMATION

Gene Name CD1A CD1a molecule [Homo sapiens]

Official Symbol CD1A

Synonyms CD1A; CD1a molecule; CD1, CD1a antigen , CD1A antigen, a polypeptide; T-cell surface glycoprotein CD1a; hTa1 thymocyte antigen; CD1A antigen, a polypeptide; cluster of differentiation 1 A; T-cell surface antigen T6/Leu-6; cortical thymocyte antigen CD1A; differentiation antigen CD1-alpha-3; epidermal dendritic cell marker CD1a; R4; T6; CD1; FCB6; HTA1;

Gene ID 909

mRNA Refseq NM_001763

Protein Refseq NP_001754

MIM 188370

Tel: 1-631-559-9269 1-516-512-3133

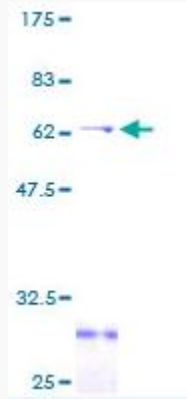
Email: info@creative-biomart.com Fax: 1-631-938-8127

45-1 Ramsey Road, Shirley, NY 11967, USA



UniProt ID

P06126



Tel: 1-631-559-9269 1-516-512-3133

Email: info@creative-biomart.com Fax: 1-631-938-8127

45-1 Ramsey Road, Shirley, NY 11967, USA