

Recombinant Human CD1D protein, His-tagged

Cat. No. CD1D-10920H Lot. No. (See product label)

SPECIFICATION

Product Overview	Recombinant Human CD1D protein(18-302 aa), fused with N-terminal His tag, was expressed in E. coli.
Species	Human
Source	E.coli
ProteinLength	18-302 aa
Tag	N-His
Form	The purified protein was Lyophilized from sterile PBS (58mM Na ₂ HPO ₄ , 17mM NaH ₂ PO ₄ , 68mM NaCl, pH7.4). 5 % trehalose and 5 % mannitol are added as protectant before lyophilization.
Purity	85%, by SDS-PAGE with Coomassie Brilliant Blue staining.
Storage	Short-term storage: Store at 2-8°C for (1-2 weeks). Long-term storage: Aliquot and store at -20°C to -80°C for up to 3 months, reconstitution with sterile water and addition of an equal volume of glycerol. Avoid repeat freeze-thaw cycles.
Reconstitution	Reconstitute at 0.25 µg/µl in 200 µl sterile water for short-term storage. After reconstitution with sterile water, if glycerol has no effect on subsequent experiments, it is recommended to add an equal volume of glycerol for long-term storage.

 Tel: 1-631-559-9269 1-516-512-3133

 Email: info@creative-biomart.com  Fax: 1-631-938-8127

 45-1 Ramsey Road, Shirley, NY 11967, USA

AA Sequence

SAEVPQRLFPLRCLQISSFANSSWTRTDGLAWLGELQTHSWSNDSDTVRSCLKPWS
 QGTFSDQQWETLQHIFRVYRSSFTRDVKEFAKMLRLSYPLELQVSAGCEVHPGNAS
 NNFFHVAFQGGKILSFQGTWEPTQEAPLWVNLAIQVLNQDKWTRETVQWLLNGT
 CPQFVSGLLESGKSELKKQVKPKAWLSRGPSPGPRLLLLVCHVSGFYKPKPVWVKW
 MRGEQEQQGTQPGDILPNADETWYLRATLDVVAGEAAGLSCRVKHSSLEGQDIVLY
 WGGSYTSM

GENE INFORMATION

Gene Name [CD1D CD1d molecule \[Homo sapiens \]](#)

Official Symbol [CD1D](#)

Synonyms

CD1D; CD1d molecule; CD1d antigen , CD1D antigen, d polypeptide; antigen-presenting glycoprotein CD1d; R3G1; thymocyte antigen CD1D; CD1D antigen, d polypeptide; T-cell surface glycoprotein CD1d; differentiation antigen CD1-alpha-3; HMC class I antigen-like glycoprotein CD1D; R3; CD1A; MGC34622;

Gene ID [912](#)

mRNA Refseq [NM_001766](#)

Protein Refseq [NP_001757](#)

MIM [188410](#)

UniProt ID [P15813](#)

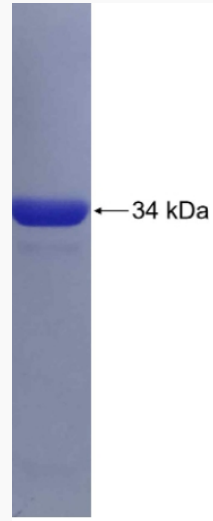
 Tel: 1-631-559-9269 1-516-512-3133

 Email: info@creative-biomart.com  Fax: 1-631-938-8127

 45-1 Ramsey Road, Shirley, NY 11967, USA



SDS-PAGE



Tel: 1-631-559-9269 1-516-512-3133

Email: info@creative-biomart.com Fax: 1-631-938-8127

45-1 Ramsey Road, Shirley, NY 11967, USA