

## Recombinant Human CD1D Protein, C-His-tagged

Cat. No. CD1D-166H Lot. No. (See product label)

### SPECIFICATION

<b>Product Overview</b>	Recombinant Human CD1D Protein with C-His tag was expressed in E. coli.
<b>Species</b>	Human
<b>Source</b>	E.coli
<b>Description</b>	<p>The CD1 multigene family encodes five forms of the CD1 T cell surface glycoprotein in human, designated CD1A, 1B, 1C, 1D and 1E. CD1, a type 1 membrane protein, has structural similarity to the MHC class I antigen and has been shown to present lipid antigens for recognition by T lymphocytes. CD1 antigens are associated with <math>\beta</math>-2-Microglobulin and expressed on cortical thymocytes, Langerhans cells, a B cell subset and some dendritic cells. Adaptor protein complexes and CD1-associated chaperones control CD1 trafficking and the development and activation of CD1-restricted T cells. CD1D is present on human intestinal epithelial cells (IEC) and exists as a <math>\beta</math>-2-Microglobulin-independent nonglycosylated form or a <math>\beta</math>-2-Microglobulin-dependent glycosylated form. The human CD1D gene maps to chromosome 1q23.1 and encodes a 335 amino acid protein that influences normal T cell maturation.</p>
<b>Molecular Mass</b>	~31 kDa
<b>AA Sequence</b>	<p>EVPQRLFPLRCLQISSFANSSWTRTDGLAWLGELQTHSWSNDSDTVRSCLKPWSQG  TFSDQQWETLQHIFRVYRSSFTRDVKEFAKMLRLSYPLELQVSAGCEVHPGNASNN  FFHVAFQGGKILSFQGTWEPTQEAPLWVNLAIQVLNQDKWTRETQWLLNGTCP  QFVSGLLESGKSELKKQVKPKAWLSRGPSPGPRLLLVCHVSGFYKPKVWVKWMR</p>

 Tel: 1-631-559-9269 1-516-512-3133

 Email: [info@creative-biomart.com](mailto:info@creative-biomart.com)  Fax: 1-631-938-8127

 45-1 Ramsey Road, Shirley, NY 11967, USA

	GEQEQQGTQPGDILPNADETWYLRATLDVVAGEAAGLSCRVKHSSLEGQDIVLYW GGSYTS
<b>Purity</b>	Transferred into competent cells and the supernatant was purified by NI column affinity chromatography and the purity is > 85% (by SDS-PAGE).
<b>Notes</b>	For research use only, not for use in diagnostic procedure.
<b>Storage</b>	Store at 4 centigrade short term. Aliquot and store at -20 centigrade long term. Avoid freeze-thaw cycles.
<b>Concentration</b>	≥0.5 mg/mL
<b>Storage Buffer</b>	PBS, 4M Urea, pH7.4
<b>GENE INFORMATION</b>	
<b>Gene Name</b>	CD1D CD1d molecule [ Homo sapiens (human) ]
<b>Official Symbol</b>	CD1D
<b>Synonyms</b>	CD1D; CD1d molecule; CD1d antigen , CD1D antigen, d polypeptide; antigen-presenting glycoprotein CD1d; R3G1; thymocyte antigen CD1D; CD1D antigen, d polypeptide; T-cell surface glycoprotein CD1d; differentiation antigen CD1-alpha-3; HMC class I antigen-like glycoprotein CD1D; R3; CD1A; MGC34622;
<b>Gene ID</b>	912
<b>mRNA Refseq</b>	NM_001766
<b>Protein Refseq</b>	NP_001757

Tel: 1-631-559-9269 1-516-512-3133

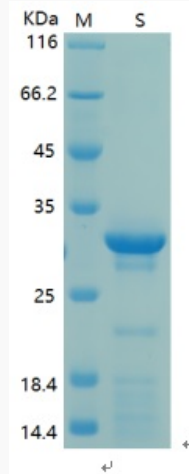
Email: [info@creative-biomart.com](mailto:info@creative-biomart.com) Fax: 1-631-938-8127

45-1 Ramsey Road, Shirley, NY 11967, USA

**MIM** 188410

**UniProt ID** P15813

**SDS-PAGE**



SDS-PAGE Result

 Tel: 1-631-559-9269 1-516-512-3133

 Email: [info@creative-biomart.com](mailto:info@creative-biomart.com)  Fax: 1-631-938-8127

 45-1 Ramsey Road, Shirley, NY 11967, USA