

## Recombinant Human CD1D protein, His-tagged

Cat. No. CD1D-2188H Lot. No. (See product label)

### SPECIFICATION

<b>Product Overview</b>	Recombinant Human CD1D protein(NP_001757.1) (Met 1-Ser 301) was expressed in HEK293, with a C-terminal polyhistidine tag.
<b>Species</b>	Human
<b>Source</b>	HEK293
<b>ProteinLength</b>	1-301 aa
<b>Form</b>	Lyophilized from sterile PBS, pH 7.4
<b>Molecular Mass</b>	The recombinant human CD1D consists of 293 amino acids and predicts a molecular mass of 33.3 kDa. As a result of glycosylation, rh CD1D migrates as an approximately 45-50 kDa band in SDS-PAGE under reducing conditions.
<b>Endotoxin</b>	< 1.0 EU per µg of the protein as determined by the LAL method.
<b>Purity</b>	> 88 % as determined by SDS-PAGE
<b>Storage</b>	Store it under sterile conditions at -20°C to -80°C upon receiving. Recommend to aliquot the protein into smaller quantities for optimal storage. Avoid repeated freeze-thaw cycles.
<b>Reconstitution</b>	It is recommended that sterile water be added to the vial to prepare a stock solution of 0.2 ug/ul. Centrifuge the vial at 4°C before opening to recover the entire contents.

 Tel: 1-631-559-9269 1-516-512-3133

 Email: [info@creative-biomart.com](mailto:info@creative-biomart.com)  Fax: 1-631-938-8127

 45-1 Ramsey Road, Shirley, NY 11967, USA

**protein Refseq-Weblink** [http://www.ncbi.nlm.nih.gov/protein/NP\\_001757.1](http://www.ncbi.nlm.nih.gov/protein/NP_001757.1)

**Unit ID** P15813

**Unit ID-Weblink** <http://www.uniprot.org/uniprot/P15813>

## GENE INFORMATION

**Gene Name** [CD1D CD1d molecule \[ Homo sapiens \]](#)

**Official Symbol** [CD1D](#)

**Synonyms** CD1D; CD1d molecule; CD1d antigen , CD1D antigen, d polypeptide; antigen-presenting glycoprotein CD1d; R3G1; thymocyte antigen CD1D; CD1D antigen, d polypeptide; T-cell surface glycoprotein CD1d; differentiation antigen CD1-alpha-3; HMC class I antigen-like glycoprotein CD1D; R3; CD1A; MGC34622;

**Gene ID** [912](#)

**mRNA Refseq** [NM\\_001766](#)

**protein Refseq** [NP\\_001757](#)

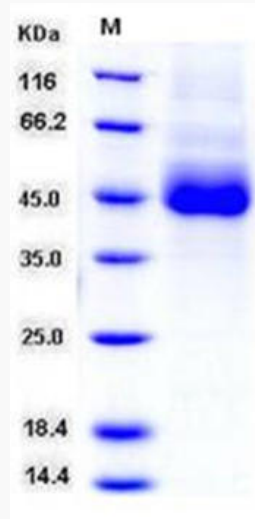
**MIM** [188410](#)

 Tel: 1-631-559-9269 1-516-512-3133

 Email: [info@creative-biomart.com](mailto:info@creative-biomart.com)  Fax: 1-631-938-8127

 45-1 Ramsey Road, Shirley, NY 11967, USA

**SDS-PAGE**



 Tel: 1-631-559-9269 1-516-512-3133

 Email: [info@creative-biomart.com](mailto:info@creative-biomart.com)  Fax: 1-631-938-8127

 45-1 Ramsey Road, Shirley, NY 11967, USA