

Recombinant Human CD1E Protein (Met39-Ala276), N-His tagged

Cat. No. CD1E-0917H Lot. No. (See product label)

SPECIFICATION

Product Overview	Recombinant Human CD1E (Met39-Ala276) fused with the N-His tag was expressed in E. coli.
Species	Human
Source	E.coli
ProteinLength	Met39-Ala276
Form	Lyophilized powder/frozen liquid
Molecular Mass	29.20 kDa
Purity	>90% as determined by SDS-PAGE.
Notes	For research use only.
Storage	Use a manual defrost freezer and avoid repeated freeze thaw cycles. Store at 2 to 8 centigrade for one week. Store at -20 to -80 centigrade for twelve months from the date of receipt.
Storage Buffer	0.01M PBS, pH 7.4, 0.02% NLS
Reconstitution	Reconstitute in sterile water for a stock solution.

 Tel: 1-631-559-9269 1-516-512-3133

 Email: info@creative-biomart.com  Fax: 1-631-938-8127

 45-1 Ramsey Road, Shirley, NY 11967, USA

Shipping They are shipped out with dry ice/blue ice unless customers require otherwise.

GENE INFORMATION

Gene Name CD1E CD1e molecule [Homo sapiens (human)]

Official Symbol CD1E

Synonyms CD1E; CD1e molecule; CD1e antigen, CD1E antigen, e polypeptide; T-cell surface glycoprotein CD1e, membrane-associated; R2G1; hCD1e; thymocyte antigen CD1E; CD1E antigen, e polypeptide; leukocyte differentiation antigen; differentiation antigen CD1-alpha-3; R2; CD1A; FLJ17609;

Gene ID 913

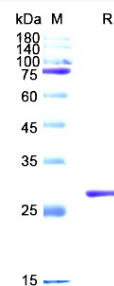
mRNA Refseq NM_001042583

Protein Refseq NP_001036048

MIM 188411

UniProt ID P15812

SDS-PAGE



 Tel: 1-631-559-9269 1-516-512-3133

 Email: info@creative-biomart.com  Fax: 1-631-938-8127

 45-1 Ramsey Road, Shirley, NY 11967, USA