

Recombinant Human CD1E Protein, C-His-tagged

Cat. No. CD1E-167H Lot. No. (See product label)

SPECIFICATION

Product Overview Recombinant Human CD1E Protein with C-His tag was expressed in E. coli.

Species Human

Source E.coli

Description

The human CD1 family consists of five chromosome 1-localized genes which encode proteins that are involved in mediating the presentation of lipid antigens of microbial or self origin on the surface of immune cells. CD1E, also known as R2 or CD1A, is a 322 amino acid single-pass type I membrane protein that localizes to the lumen of the endoplasmic reticulum, as well as to the Golgi apparatus and contains one Ig-like domain. Expressed in a variety of tissues and on cortical thymocytes, dendritic cells and Langerhans cells, CD1E exists as a heterodimer with β -2-microglobulin and is necessary for the presentation of glycolipid antigens on the cell surface. CD1E is subject to posttranslational mono-ubiquitination and may also be proteolytically cleaved in endosomes to yield a soluble protein. CD1E is present on the surface of some T cell leukemias, suggesting a possible role in tumorigenesis.

Molecular Mass ~30 kDa

AA Sequence

EEQLSFRMLQTSSFANHSWAHSEGSGWLGDLQTHGWDTVLGTIRFLKPWSHGNS
KQELKNLQSLFQLYFHSFIQIVQASAGQFQLEYPFEIQILAGCRMNAPQIFLNMAYQG
SDFLSFQGISWEPSPGAGIRAQNIKVLNRYLDIKEILQSLLGHTCPRFLAGLMEAGE
SELKRKVKPEAWLSCGPSPGPGRLQLVCHVSGFYKPKVWVMWMRGEQEQRGTQ

 Tel: 1-631-559-9269 1-516-512-3133

 Email: info@creative-biomart.com  Fax: 1-631-938-8127

 45-1 Ramsey Road, Shirley, NY 11967, USA

RGDVLPNADETWYLRATLDVAAGEAAGLSCRVKHSSLGGHDLIIHWGGY

Purity

Transferred into competent cells and the supernatant was purified by NI column affinity chromatography and the purity is > 85% (by SDS-PAGE).

Notes

For research use only, not for use in diagnostic procedure.

Storage

Store at 4 centigrade short term. Aliquot and store at -20 centigrade long term. Avoid freeze-thaw cycles.

Concentration

≥0.5 mg/mL

Storage Buffer

PBS, 4M Urea, pH7.4

GENE INFORMATION

Gene Name

CD1E CD1e molecule [Homo sapiens (human)]

Official Symbol

CD1E

Synonyms

CD1E; CD1e molecule; CD1e antigen , CD1E antigen, e polypeptide; T-cell surface glycoprotein CD1e, membrane-associated; R2G1; hCD1e; thymocyte antigen CD1E; CD1E antigen, e polypeptide; leukocyte differentiation antigen; differentiation antigen CD1-alpha-3; R2; CD1A; FLJ17609;

Gene ID

913

mRNA Refseq

NM_001042583

Protein Refseq

NP_001036048

 Tel: 1-631-559-9269 1-516-512-3133

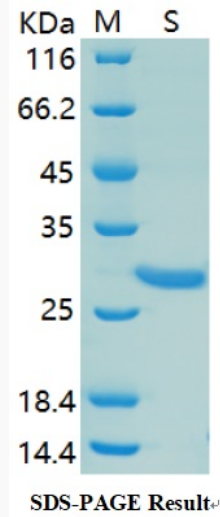
 Email: info@creative-biomart.com  Fax: 1-631-938-8127

 45-1 Ramsey Road, Shirley, NY 11967, USA

MIM 188411

UniProt ID P15812

SDS-PAGE



 Tel: 1-631-559-9269 1-516-512-3133

 Email: info@creative-biomart.com  Fax: 1-631-938-8127

 45-1 Ramsey Road, Shirley, NY 11967, USA