

Recombinant Full Length Human CD2 Transmembrane protein (VLPs), GFP-tagged

Cat. No. CD2-001HV **Lot. No.** (See product label)

SPECIFICATION

Product Overview	Recombinant Human CD2 Full Length Transmembrane protein (VLPs) with GFP tag was expressed in HEK293.
Species	Human
Source	HEK293
ProteinLength	1-351aa
Description	The protein encoded by this gene is a surface antigen found on all peripheral blood T-cells. The encoded protein interacts with LFA3 (CD58) on antigen presenting cells to optimize immune recognition. A locus control region (LCR) has been found in the 3' flanking sequence of this gene.
Tag	C-EGFP
AA Sequence	KEITNALETWGALGQDINLDIPSFQMSDDIDDIKWEKTSKDKKIAQFRKEKETFKKEKDTYKLFKNGTLKIKHLKTDDQDIYKVSIIYDTKGKNVLEKIFDLKIQERVSKPKISWTCINTLTCEVMNGTDPELNLYQDGKHLKLSQRVITHKWTTLSAKFKCTAGNKVSKESSVEPVSCEPKGLDIYLIIGICGGGSLLMV FVALLVFYITKRKKQRSRRNDEELETRAHRVATEERGRKPHQIPASTPQNPATSQHPPPPPGHRSQAPSHRPPPPGHRVQHQPQKRP PAPSGTQVHQKGPPLPRPRVQPKPPHGAAENSLSPSSN
Endotoxin	< 1 EU/μg by LAL

 Tel: 1-631-559-9269 1-516-512-3133

 Email: info@creative-biomart.com  Fax: 1-631-938-8127

 45-1 Ramsey Road, Shirley, NY 11967, USA

Notes	Mix the sample gently by repeatedly pipetting it up and down. Do not vortex. Repeated freezing and thawing is not recommended. The immunization strategy should be optimized (antigen dose, regimen and adjuvant).
Storage	Store it under sterile conditions at -20 to -80 centigrade twelve months from the date of receipt.
Storage Buffer	40 mM Tris-HCl, pH 8.0, 110 mM NaCl, 2.2 mM KCl, and 20% glycerol
Reconstitution	We recommend that this vial be briefly centrifuged prior to opening to bring the contents to the bottom. Please reconstitute protein in deionized sterile water to a concentration of 0.1-1.0 mg/mL. Aliquot for long-term storage at -80 centigrade. Solubilize for 60 minutes at room temperature with occasional gentle mixing. Avoid vigorous shaking or vortexing.

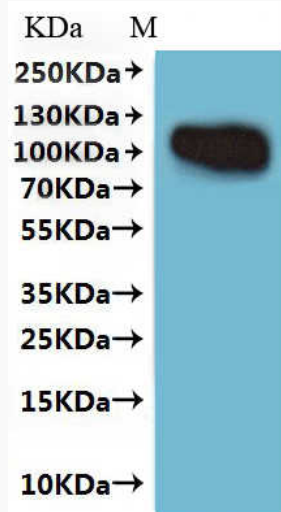
GENE INFORMATION

Gene Name	CD2 CD2 molecule [Homo sapiens (human)]
Official Symbol	CD2
Synonyms	CD2; CD2 molecule; CD2 antigen (p50), sheep red blood cell receptor , SRBC; T-cell surface antigen CD2; LFA-3 receptor; rosette receptor; erythrocyte receptor; lymphocyte-function antigen-2; T-cell surface antigen T11/Leu-5; CD2 antigen (p50), sheep red blood cell receptor; T11; SRBC; LFA-2; FLJ46032;
Gene ID	914
mRNA Refseq	NM_001767
Protein Refseq	NP_001758

 Tel: 1-631-559-9269 1-516-512-3133

 Email: info@creative-biomart.com  Fax: 1-631-938-8127

 45-1 Ramsey Road, Shirley, NY 11967, USA

MIM 186990**UniProt ID** P06729

Predicted band size-63.8 kDa; Observed band size-110 kDa

It is detected by Mouse anti-EGFP monoclonal antibody.

This tag can be tested only under denaturing conditions.

The reducing (R) protein migrates as 110 kDa in Western blotting may be due to glycosylation.

 Tel: 1-631-559-9269 1-516-512-3133

 Email: info@creative-biomart.com  Fax: 1-631-938-8127

 45-1 Ramsey Road, Shirley, NY 11967, USA