

Recombinant Human CD2 Protein, GST-Tagged

Cat. No. CD2-0738H **Lot. No.** (See product label)

SPECIFICATION

Product Overview	Human CD2 full-length ORF (NP_001758.1, 1 a.a. - 351 a.a.) recombinant protein with GST-tag at N-terminal.
Species	Human
Source	Wheat Germ
Description	The protein encoded by this gene is a surface antigen found on all peripheral blood T-cells. The encoded protein interacts with LFA3 (CD58) on antigen presenting cells to optimize immune recognition. A locus control region (LCR) has been found in the 3' flanking sequence of this gene. [provided by RefSeq, Jun 2016]
Molecular Mass	65.8 kDa
AA Sequence	MSFPCKFVASFLIFNVSSKGAVSKEITNALETWGALGQDINLDIPSFQMSDDIDDIK WEKTSDKKKIAQFRKEKETFKEDTYKLFKNGTLKIKHLKTDDQDIYKVSIIYDTKGKN VLEKIFDLKIQERVSKPKISWTCINTTLTCEVMNGTDPELNLYQDGKHLKLSQRVITHK WTTLSAKFKCTAGNKVSKESSVEPVSCPEKGLDIYLIIGICGGGSLLMVVFALLVFYI TKRKKQRSRRNDEELETRAHRVATEERGRKPQQIPASTPQNPATSQHPPPPGHR SQAPSHRPPPPGHRVQHQPQKRPPAPSGTQVHQKGPPLRPRVQPKPPHGAAE NSLSPSSN
Applications	Enzyme-linked Immunoabsorbent Assay Western Blot (Recombinant protein) Antibody Production

 Tel: 1-631-559-9269 1-516-512-3133

 Email: info@creative-biomart.com  Fax: 1-631-938-8127

 45-1 Ramsey Road, Shirley, NY 11967, USA

Protein Array

Storage Store at -80 centigrade. Aliquot to avoid repeated freezing and thawing.

Storage Buffer 50 mM Tris-HCl, 10 mM reduced Glutathione, pH=8.0 in the elution buffer.

GENE INFORMATION

Gene Name [CD2 CD2 molecule \[Homo sapiens \]](#)

Official Symbol [CD2](#)

Synonyms CD2; CD2 molecule; CD2 antigen (p50), sheep red blood cell receptor, SRBC; T-cell surface antigen CD2; LFA-3 receptor; rosette receptor; erythrocyte receptor; lymphocyte-function antigen-2; T-cell surface antigen T11/Leu-5; CD2 antigen (p50), sheep red blood cell receptor; T11; SRBC; LFA-2; FLJ46032;

Gene ID [914](#)

mRNA Refseq [NM_001767](#)

Protein Refseq [NP_001758](#)

MIM [186990](#)

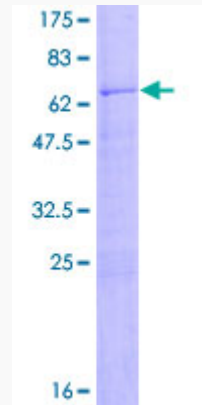
UniProt ID [P06729](#)

 Tel: 1-631-559-9269 1-516-512-3133

 Email: info@creative-biomart.com  Fax: 1-631-938-8127

 45-1 Ramsey Road, Shirley, NY 11967, USA

**Quality Control
Testing**



12.5% SDS-PAGE Stained with Coomassie Blue.

 Tel: 1-631-559-9269 1-516-512-3133

 Email: info@creative-biomart.com  Fax: 1-631-938-8127

 45-1 Ramsey Road, Shirley, NY 11967, USA