

Recombinant Human CD2 Protein, His-tagged

Cat. No. CD2-168H Lot. No. (See product label)

SPECIFICATION

Product Overview Recombinant Human CD2 Protein with His tag was expressed in E. coli.

Species Human

Source E.coli

Description

CD2 is a transmembrane glycoprotein expressed early in thymocyte development and present on most circulating T cells. CD2 plays a role in T cell adhesion through binding to its ligand CD58 (LFA-3). Stimulation of CD2 also leads to T cell activation and proliferation. T cells from mice deficient in both CD2 and CD28 have severe defects in T cell activation and function, while T cells deficient in either CD2 or CD28 are still capable of mounting a response, suggesting that CD2 and CD28 may have overlapping functions and may be able to compensate for each other. In addition, engagement of CD2 and CD58 was recently demonstrated to be the primary costimulatory signal in T cells that lack CD28. CD2 expression also distinguishes a subset of plasmacytoid dendritic cells found in tumors and tonsils that express lysozyme, higher levels of IL-12 p40, and higher levels of CD80.

Molecular Mass ~26 kDa

AA Sequence

KEITNALETWGALGQDINLDIPSFQMSDDIDDIKWEKTSKDKKIAQFRKEKETFKEKD
 TYKLFKNGTLKIKHLKTDDQDIYKVSIIYDTKGKNVLEKIFDLKIQERVSKPKISWTCINT
 TLTCEVMNGTDPELNLYQDGKHLKLSQRVITHKWTTLSAKFKCTAGNKVSKESSV
 EPVSCPEKGLD

 Tel: 1-631-559-9269 1-516-512-3133

 Email: info@creative-biomart.com  Fax: 1-631-938-8127

 45-1 Ramsey Road, Shirley, NY 11967, USA

Purity	Transferred into competent cells and the supernatant was purified by NI column affinity chromatography and the purity is > 85% (by SDS-PAGE).
Notes	For research use only, not for use in diagnostic procedure.
Storage	Store at 4 centigrade short term. Aliquot and store at -20 centigrade long term. Avoid freeze-thaw cycles.
Storage Buffer	PBS, 4M Urea, pH7.4

GENE INFORMATION

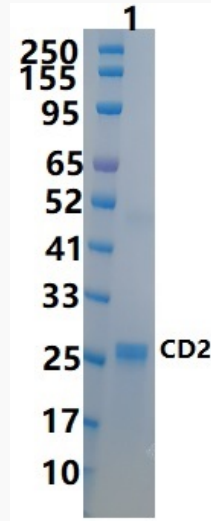
Gene Name	CD2 CD2 molecule [Homo sapiens (human)]
Official Symbol	CD2
Synonyms	CD2; CD2 molecule; CD2 antigen (p50), sheep red blood cell receptor , SRBC; T-cell surface antigen CD2; LFA-3 receptor; rosette receptor; erythrocyte receptor; lymphocyte-function antigen-2; T-cell surface antigen T11/Leu-5; CD2 antigen (p50), sheep red blood cell receptor; T11; SRBC; LFA-2; FLJ46032;
Gene ID	914
mRNA Refseq	NM_001767
Protein Refseq	NP_001758
MIM	186990
UniProt ID	P06729

 Tel: 1-631-559-9269 1-516-512-3133

 Email: info@creative-biomart.com  Fax: 1-631-938-8127

 45-1 Ramsey Road, Shirley, NY 11967, USA

SDS-PAGE



 Tel: 1-631-559-9269 1-516-512-3133

 Email: info@creative-biomart.com  Fax: 1-631-938-8127

 45-1 Ramsey Road, Shirley, NY 11967, USA