

Active Recombinant Human CD2 Homodimer Protein, His&Avi tagged

Cat. No. CD2-17H Lot. No. (See product label)

SPECIFICATION

Product Overview CD2 protein dimer contains a CD2 extracellular domain (UniProt# P06729) fused with a proprietary cis-dimer motif followed by a tandem His-Avi tag at the C-terminus was expressed in HEK293T.

Species Human

Source HEK293T

ProteinLength 25-209 aa

Description Human cluster of differentiation 2 (CD2), is a Type I transmembrane glycoprotein and a member of the immunoglobulin superfamily. CD2 is also known as T-cell surface antigen T11/Leu-5, lymphocyte function-associated antigen-2 (LFA-2), lymphocyte function-associated antigen-3 receptor (LFA-3 receptor), sheep red blood cell receptor (SRBC), CD2 molecule, erythrocyte receptor, and rosette receptor. CD2 contains an extracellular domain with two immunoglobulin-like domains (Ig-like), a transmembrane domain, and a cytoplasmic domain. CD2 is expressed on human T cells and natural killer (NK) cells. CD2 interacts with itself or other adhesion molecules, such as lymphocyte function-associated antigen-3 (LFA-3/CD58), to play an important role in mediating cell adhesion and signal transduction. CD2 is expressed in a variety of cancer cells, including T-cell lymphomas and leukemias and is also found in B-cell neoplasms. CD2 expression can serve as a prognostic biomarker for these types of cancer. CD2 is an emerging target of cancer

 Tel: 1-631-559-9269 1-516-512-3133

 Email: info@creative-biomart.com  Fax: 1-631-938-8127

 45-1 Ramsey Road, Shirley, NY 11967, USA

	therapeutics.
Molecular Mass	62 kDa
Purity	Greater than 90% dimer form as determined by SDS-PAGE under non-reducing condition
Application	Verified Applications: ELISA for CD2-specific antibody binding assay and BLI for lymphocyte function-associated antigen-3 (LFA-3) ligand protein binding assays. Suggested Applications: SPR for CD2-specific antibody and LFA-3 protein binding assays. Animal immunization, RUO.
Storage	Store at -80 centigrade.
Storage Buffer	0.22µm filtered PBS, pH 7.4
Shipping	Frozen Dry Ice

GENE INFORMATION

Gene Name	CD2 CD2 molecule [Homo sapiens (human)]
Official Symbol	CD2
Synonyms	CD2; CD2 molecule; CD2 antigen (p50), sheep red blood cell receptor, SRBC; T-cell surface antigen CD2; LFA-3 receptor; rosette receptor; erythrocyte receptor; lymphocyte-function antigen-2; T-cell surface antigen T11/Leu-5; CD2 antigen (p50), sheep red blood cell receptor; T11; SRBC; LFA-2; FLJ46032;
Gene ID	914

 Tel: 1-631-559-9269 1-516-512-3133

 Email: info@creative-biomart.com  Fax: 1-631-938-8127

 45-1 Ramsey Road, Shirley, NY 11967, USA

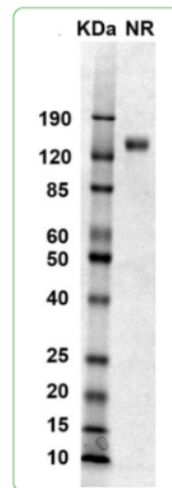
mRNA Refseq [NM_001767](#)

Protein Refseq [NP_001758](#)

MIM [186990](#)

UniProt ID [P06729](#)

SDS-PAGE



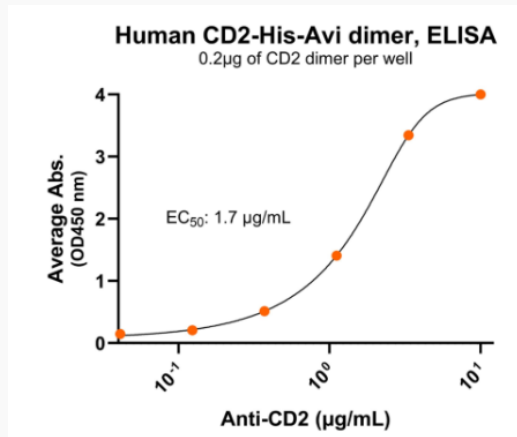
MW: Molecular Weight marker reduced condition NR: CD2 dimer under non-reducing condition

 Tel: 1-631-559-9269 1-516-512-3133

 Email: info@creative-biomart.com  Fax: 1-631-938-8127

 45-1 Ramsey Road, Shirley, NY 11967, USA

**Bioactivity-Antibody
Binding**



Immobilized human CD2-His-Avi protein dimer at 2 µg/mL (100 µL/well) can bind anti-human CD2 monoclonal antibody with half maximal effective concentration (EC₅₀) range of 0.8-3.3 µg/mL (QC tested).

 Tel: 1-631-559-9269 1-516-512-3133

 Email: info@creative-biomart.com  Fax: 1-631-938-8127

 45-1 Ramsey Road, Shirley, NY 11967, USA