

Recombinant Human CD2 protein, His-tagged

Cat. No. CD2-2189H Lot. No. (See product label)

SPECIFICATION

Product Overview	Recombinant Human CD2 protein(P06729)(Lys25-Asp209), fused with C-terminal His tag, was expressed in HEK293.
Species	Human
Source	HEK293
ProteinLength	Lys25-Asp209
Tag	C-His
Form	Lyophilized from 0.22µm filtered solution in PBS (pH 7.4). Normally 5% trehalose is added as protectant before lyophilization.
Bio-activity	Immobilized Human CD2, His Tag at 2ug/ml (100ul/well) on the plate. Dose response curve for Human CD58, hFc Tag with the EC50 of 0.32ug/ml determined by ELISA.
Molecular Mass	The protein has a predicted MW of 22.3 kDa. Due to glycosylation, the protein migrates to 40-50 kDa based on Tris-Bis PAGE result.
Endotoxin	Less than 1EU per µg by the LAL method.
Purity	> 95% as determined by Tris-Bis PAGE;> 95% as determined by SEC-HPLC
Storage	Reconstituted protein stable at -80°C for 12 months, 4°C for 1 week. Use a manual

 Tel: 1-631-559-9269 1-516-512-3133

 Email: info@creative-biomart.com  Fax: 1-631-938-8127

 45-1 Ramsey Road, Shirley, NY 11967, USA

defrost freezer and avoid repeated freeze-thaw cycles.

Reconstitution

Centrifuge tubes before opening. Reconstituting to a concentration more than 100 µg/ml is recommended. Dissolve the lyophilized protein in distilled water.

GENE INFORMATION

Gene Name [CD2 CD2 molecule \[Homo sapiens \]](#)

Official Symbol [CD2](#)

Synonyms

CD2; CD2 molecule; CD2 antigen (p50), sheep red blood cell receptor , SRBC; T-cell surface antigen CD2; LFA-3 receptor; rosette receptor; erythrocyte receptor; lymphocyte-function antigen-2; T-cell surface antigen T11/Leu-5; CD2 antigen (p50), sheep red blood cell receptor; T11; SRBC; LFA-2; FLJ46032;

Gene ID [914](#)

mRNA Refseq [NM_001767](#)

Protein Refseq [NP_001758](#)

MIM [186990](#)

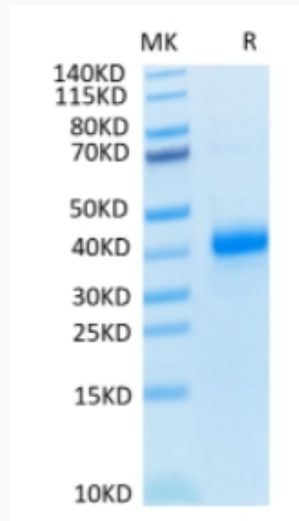
UniProt ID [P06729](#)

 Tel: 1-631-559-9269 1-516-512-3133

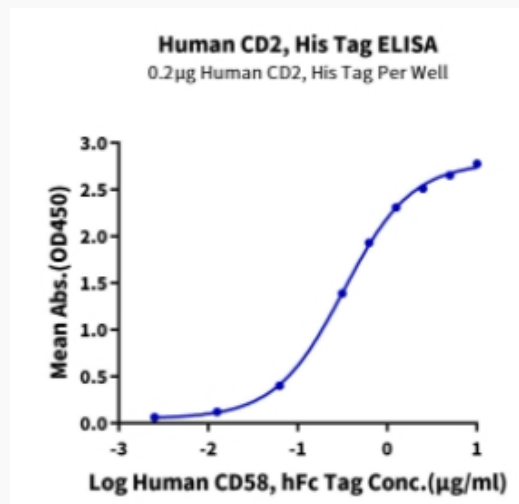
 Email: info@creative-biomart.com  Fax: 1-631-938-8127

 45-1 Ramsey Road, Shirley, NY 11967, USA

Tris-Bis PAGE



ELISA Data



 Tel: 1-631-559-9269 1-516-512-3133

 Email: info@creative-biomart.com  Fax: 1-631-938-8127

 45-1 Ramsey Road, Shirley, NY 11967, USA