

Recombinant human CD2 protein,His-tagged

Cat. No. CD2-33H Lot. No. (See product label)

SPECIFICATION

| | |
|-------------------------|---|
| Product Overview | Recombinant human CD2 protein,His-tagged,expressed in Baculovirus. |
| Species | Human |
| Source | Baculovirus |
| ProteinLength | 25-209aa |
| Description | <p>CD2, also known as T-cell surface antigen CD2, is a cell adhesion molecule found on the surface of T cells and natural killer (NK) cells. It interacts with other adhesion molecules, such as lymphocyte function-associated antigen-3 (LFA-3/CD58) in humans, or CD48 in rodents. CD2 is a specific marker for T cells and NK cells. The great majority of T cell lymphomas and leukaemias also express CD2, making it possible to use the presence of the antigen to distinguish these conditions from B cell neoplasms. Recombinant human CD2 protein, fused to His tag, was expressed in insect cell and purified by using conventional chromatography techniques.</p> |
| Tag | His |
| Molecular Mass | 22.3 kDa |
| AA Sequence | <p>ADPKEITNAL ETWGALGQDI NLDIPSFQMS DDIDDIKWEK TSDKKKIAQF RKEKETFKEK DTYKLFKNGT LKIKHLKTDD QDIYKVSIIYD TKGKNVLEKI FDLKIQERVS KPKISWTCIN TTLTCEVMNG TDPELNLYQD GKHLKLSQRV ITHKWTTLSL</p> |

 Tel: 1-631-559-9269 1-516-512-3133

 Email: info@creative-biomart.com  Fax: 1-631-938-8127

 45-1 Ramsey Road, Shirley, NY 11967, USA

AKFKCTAGNK VSKESSVEPV SCPEKGLDHH HHHH

Purity > 95% by SDS-PAGE

Applications SDS-PAGE

Notes For research use only. This product is not intended or approved for human, diagnostics or veterinary use.

Storage Can be stored at +2C to +8C for 1 week. For long term storage, aliquot and store at -20C to -80C. Avoid repeated freezing and thawing cycles.

Concentration 0.5mg/ml (determined by absorbance at 280nm)

Storage Buffer Liquid in. Phosphate-Buffered Saline (pH 7.4) containing 10% glycerol

GenelD [914](#)

References Meini E., et al. (2000) J Immunol. 165: 3578-3583.
Kalland ME., et al. (2011) J Immunol. 187: 5233-45.

GENE INFORMATION

Gene Name [CD2 CD2 molecule \[Homo sapiens \(human\) \]](#)

Official Symbol [CD2](#)

Synonyms T-cell surface antigen CD2, CD2, LFA-2, SRBC, T11

mRNA Refseq [NM_001767](#)

 Tel: 1-631-559-9269 1-516-512-3133

 Email: info@creative-biomart.com  Fax: 1-631-938-8127

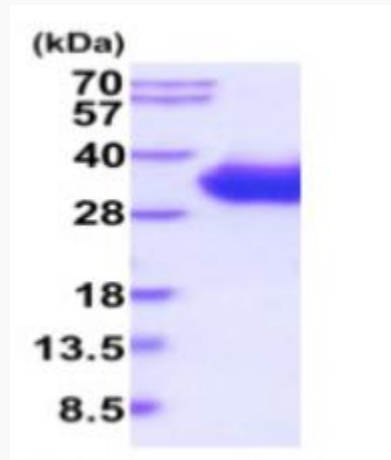
 45-1 Ramsey Road, Shirley, NY 11967, USA

Protein Refseq NP_001758

MIM 186990

UniProt ID P06729

3ug by SDS-PAGE
under reducing
condition and
visualized by
Coomassie blue
stain.



15% SDS-PAGE(3ug)

Tel: 1-631-559-9269 1-516-512-3133

Email: info@creative-biomart.com Fax: 1-631-938-8127

45-1 Ramsey Road, Shirley, NY 11967, USA