

## Recombinant Human CD200 protein, His-Avi-tagged

**Cat. No.** CD200-029H    **Lot. No.** (See product label)

### SPECIFICATION

<b>Product Overview</b>	Recombinant Human CD200 R1 Protein is expressed from mammalian with His Tag and Avi Tag at the C-terminal. It contains Ala36-Ser163.
<b>Species</b>	Human
<b>Source</b>	HEK293
<b>ProteinLength</b>	Ala36-Ser163
<b>Description</b>	CD200Fc, a chimeric molecule including the extracellular domain of CD200 and a murine IgG2a Fc region, regulates immune responses following engagement of a cell surface receptor, CD200R, expressed on cells of the myeloid and T cell lineage. A recent report focused attention on a family of CD200Rs, but concluded that only one member used CD200 as its ligand.
<b>Form</b>	Supplied as 0.22um filtered solution in PBS (pH 7.4).
<b>Molecular Mass</b>	The protein has a predicted MW of 14.3 kDa. Due to glycosylation, the protein migrates to 52-70KDa based on Bis-Tris PAGE result.
<b>Endotoxin</b>	Less than 1 EU per ug by the LAL method.
<b>Purity</b>	> 95% as determined by Bis-Tris PAGE; > 95% as determined by HPLC
<b>Storage</b>	The product should be stored at -70°C. Please do not repeated freeze-thaw cycles.

 Tel: 1-631-559-9269    1-516-512-3133

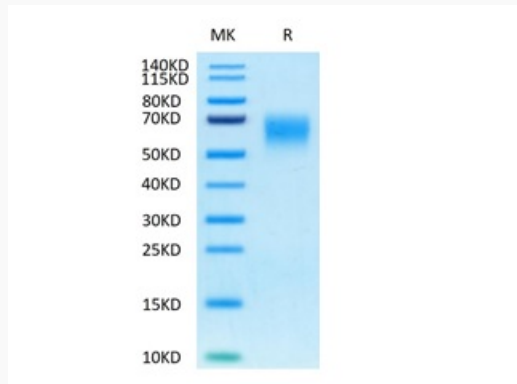
 Email: [info@creative-biomart.com](mailto:info@creative-biomart.com)     Fax: 1-631-938-8127

 45-1 Ramsey Road, Shirley, NY 11967, USA

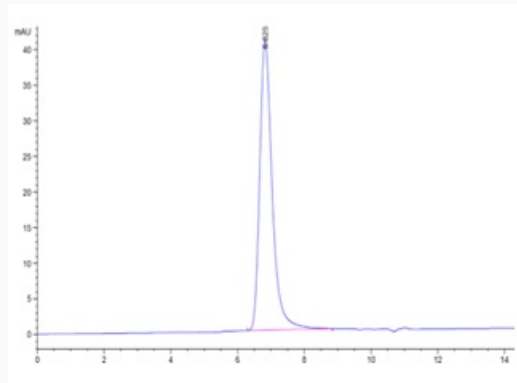
## GENE INFORMATION

**Synonyms** CD200R, CRTR2, MOX2R, OX2R

**Tris-Bis PAGE of  
CD200-029H**



**SEC-HPLC of CD200-  
029H**



 Tel: 1-631-559-9269 1-516-512-3133

 Email: [info@creative-biomart.com](mailto:info@creative-biomart.com)  Fax: 1-631-938-8127

 45-1 Ramsey Road, Shirley, NY 11967, USA