

Recombinant Human CD200 Protein, GST-Tagged

Cat. No. CD200-0742H Lot. No. (See product label)

SPECIFICATION

Product Overview	Human CD200 partial ORF (NP_005935, 34 a.a. - 124 a.a.) recombinant protein with GST-tag at N-terminal.
Species	Human
Source	Wheat Germ
Description	This gene encodes a type I membrane glycoprotein containing two extracellular immunoglobulin domains, a transmembrane and a cytoplasmic domain. This gene is expressed by various cell types, including B cells, a subset of T cells, thymocytes, endothelial cells, and neurons. The encoded protein plays an important role in immunosuppression and regulation of anti-tumor activity. Alternative splicing results in multiple transcript variants encoding different isoforms. [provided by RefSeq, Jan 2016]
Molecular Mass	35.75 kDa
AA Sequence	VVTQDEREQLYTPASLKCSLQNAQEALIVTWQKKKAVSPENMVTFSENHGVVIQPA YKDKINITQLGLQNSTITFWNITLEDEGCYMCLFN
Applications	Enzyme-linked Immunoabsorbent Assay Western Blot (Recombinant protein) Antibody Production Protein Array

 Tel: 1-631-559-9269 1-516-512-3133

 Email: info@creative-biomart.com  Fax: 1-631-938-8127

 45-1 Ramsey Road, Shirley, NY 11967, USA

Storage Store at -80 centigrade. Aliquot to avoid repeated freezing and thawing.

Storage Buffer 50 mM Tris-HCl, 10 mM reduced Glutathione, pH=8.0 in the elution buffer.

GENE INFORMATION

Gene Name [CD200 CD200 molecule \[Homo sapiens \]](#)

Official Symbol [CD200](#)

Synonyms CD200; CD200 molecule; antigen identified by monoclonal MRC OX 2, CD200 antigen, MOX1, MOX2; OX-2 membrane glycoprotein; MRC; OX 2; CD200 antigen; MRC OX-2 antigen; antigen identified by monoclonal MRC OX-2; MOX1; MOX2; OX-2;

Gene ID [4345](#)

mRNA Refseq [NM_001004196](#)

Protein Refseq [NP_001004196](#)

MIM [155970](#)

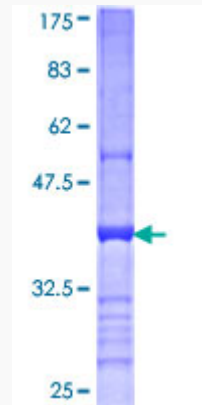
UniProt ID [P41217](#)

 Tel: 1-631-559-9269 1-516-512-3133

 Email: info@creative-biomart.com  Fax: 1-631-938-8127

 45-1 Ramsey Road, Shirley, NY 11967, USA

**Quality Control
Testing**



12.5% SDS-PAGE Stained with Coomassie Blue.

 Tel: 1-631-559-9269 1-516-512-3133

 Email: info@creative-biomart.com  Fax: 1-631-938-8127

 45-1 Ramsey Road, Shirley, NY 11967, USA