

Recombinant Human CD200 protein, His-tagged

Cat. No. CD200-2059H Lot. No. (See product label)

SPECIFICATION

Product Overview Recombinant Human CD200 protein (Gln31-Gly232) was fused to His-tag at C-terminus and expressed in human 293 cells (HEK293).

Species Human

Source HEK293

ProteinLength Gln31-Gly232

Description CD200 is also known as OX-2 membrane glycoprotein (OX-2), is a type-1 membrane glycoprotein, which contains two immunoglobulin domains (1 Ig-like C2-type (immunoglobulin-like) domain and Ig-like V-type (immunoglobulin-like) domain), and thus belongs to the immunoglobulin superfamily. CD200/OX-2 is widely expressed in multiple cell types. CD200 interacts with a structurally related receptor (CD200R) expressed mainly on myeloid cells and is involved in regulation of macrophage and mast cell function. OX-2/CD200 and CD200R associate via their respective N-terminal Ig-like domains. CD200 also plays an important role in prevention of graft rejection, autoimmune diseases and spontaneous abortion.

Predicted N Terminal Gln 31

Form Lyophilized from 0.22 µm filtered solution in PBS, pH7.4, 10% trehalose.

Molecular Mass The protein has a calculated MW of 23.3 kDa. The protein migrates as 35-45 kDa under reducing (R) condition (SDS-PAGE) due to glycosylation.

 Tel: 1-631-559-9269 1-516-512-3133

 Email: info@creative-biomart.com  Fax: 1-631-938-8127

 45-1 Ramsey Road, Shirley, NY 11967, USA

| | |
|-----------------------|---|
| Endotoxin | Less than 1.0 EU per µg by the LAL method. |
| Purity | >98% as determined by SDS-PAGE. |
| Storage | <p>For long term storage, the product should be stored at lyophilized state at -20 centigrade or lower.</p> <p>Please avoid repeated freeze-thaw cycles.</p> <p>This product is stable after storage at:</p> <p>-20 to -70 centigrade for 12 months in lyophilized state; -70 centigrade for 3 months under sterile conditions after reconstitution.</p> |
| Reconstitution | It is recommended that sterile water be added to the vial to prepare a stock solution of 0.2 ug/ul. Centrifuge the vial at 4°C before opening to recover the entire contents. |

GENE INFORMATION

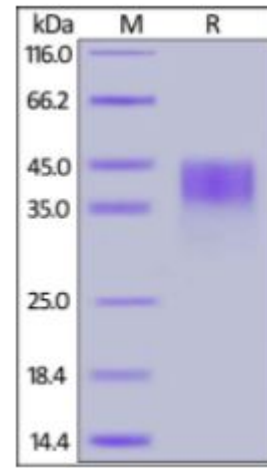
| | |
|------------------------|-----------------------|
| Gene Name | CD200 |
| Official Symbol | CD200 |
| Synonyms | MRC; MOX1; MOX2; OX-2 |
| Gene ID | 4345 |
| mRNA Refseq | NM_005944.7 |
| Protein Refseq | NP_005935.4 |
| MIM | 155970 |
| UniProt ID | P41217 |

 Tel: 1-631-559-9269 1-516-512-3133

 Email: info@creative-biomart.com  Fax: 1-631-938-8127

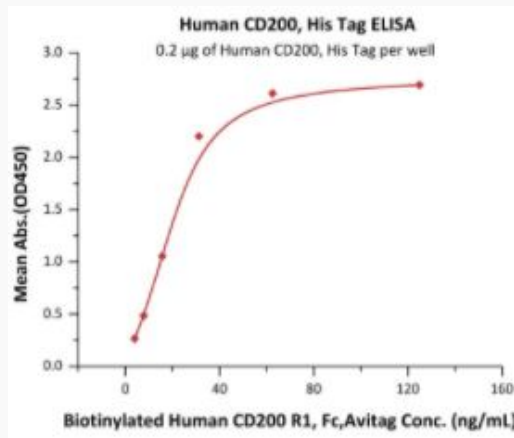
 45-1 Ramsey Road, Shirley, NY 11967, USA

SDS-PAGE of CD200-2059H



Human CD200, His Tag on SDS-PAGE under reducing (R) condition. The gel was stained overnight with Coomassie Blue. The purity of the protein is greater than 98%.

Bioactivity-ELISA of CD200-2059H



Immobilized Human CD200, His Tag at 2 µg/mL (100 µL/well) can bind Biotinylated Human CD200 R1, Fc,Avitag with a linear range of 1-31 ng/mL.

Tel: 1-631-559-9269 1-516-512-3133

Email: info@creative-biomart.com Fax: 1-631-938-8127

45-1 Ramsey Road, Shirley, NY 11967, USA