

Recombinant Human CD200 Protein, DYKDDDDK/His-tagged

Cat. No. CD200-212H **Lot. No.** (See product label)

SPECIFICATION

Product Overview	Recombinant Human protein from the extracellular domain region(Gln31-Gly232) of CD200 molecule(CD200), transcript variant 1(NM_005944), with a DYKDDDDK and polyhistidine tag, was expressed in human cells.
Species	Human
Source	HEK293
ProteinLength	Gln31-Gly232
Description	This gene encodes a type I membrane glycoprotein containing two extracellular immunoglobulin domains, a transmembrane and a cytoplasmic domain. This gene is expressed by various cell types, including B cells, a subset of T cells, thymocytes, endothelial cells, and neurons. The encoded protein plays an important role in immunosuppression and regulation of anti-tumor activity. Alternative splicing results in multiple transcript variants encoding different isoforms.
Form	Purified protein formulated in a sterile solution of TBS buffer, pH7.391, without any preservatives.
Molecular Mass	25.3 kDa
Endotoxin	Endotoxin level is < 0.1 ng/g of protein (<1EU /g)
Purity	>90% by SDS-PAGE gel and Coomassie Blue staining

 Tel: 1-631-559-9269 1-516-512-3133

 Email: info@creative-biomart.com  Fax: 1-631-938-8127

 45-1 Ramsey Road, Shirley, NY 11967, USA

Applications Antigen, Western, ELISA and other in vitro binding or in vivo functional assays, and protein-protein interaction studies.

GENE INFORMATION

Gene Name [CD200 CD200 molecule \[Homo sapiens \]](#)

Official Symbol [CD200](#)

Synonyms CD200; CD200 molecule; antigen identified by monoclonal MRC OX 2 , CD200 antigen , MOX1, MOX2; OX-2 membrane glycoprotein; MRC; OX 2; CD200 antigen; MRC OX-2 antigen; antigen identified by monoclonal MRC OX-2; MOX1; MOX2; OX-2;

Gene ID [4345](#)

mRNA Refseq [NM_001004196](#)

Protein Refseq [NP_001004196](#)

MIM [155970](#)

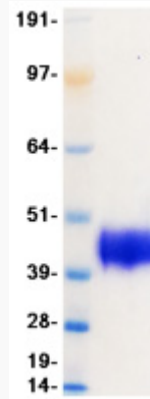
UniProt ID [P41217](#)

 Tel: 1-631-559-9269 1-516-512-3133

 Email: info@creative-biomart.com  Fax: 1-631-938-8127

 45-1 Ramsey Road, Shirley, NY 11967, USA

SDS-PAGE



 Tel: 1-631-559-9269 1-516-512-3133

 Email: info@creative-biomart.com  Fax: 1-631-938-8127

 45-1 Ramsey Road, Shirley, NY 11967, USA