

Recombinant Human CD200 protein, His-tagged

Cat. No. CD200-219H **Lot. No.** (See product label)

SPECIFICATION

Product Overview	Recombinant Human CD200 protein(P41217-1)(Gln31-Gly232), fused with C-terminal His tag, was expressed in HEK293.
Species	Human
Source	HEK293
ProteinLength	Gln31-Gly232
Tag	C-His
Form	Lyophilized from 0.22µm filtered solution in PBS (pH 7.4). Normally 5% trehalose is added as protectant before lyophilization.
Bio-activity	Immobilized Human CD200, His Tag at 1ug/ml (100ul/Well) on the plate. Dose response curve for Human CD200 R1, hFc Tag with the EC50 2.4ng/ml determined by ELISA.
Molecular Mass	The protein has a predicted MW of 23.5 kDa. Due to glycosylation, the protein migrates to 40-60 kDa based on Tris-Bis PAGE result.
Endotoxin	Less than 1EU per µg by the LAL method.
Purity	> 95% as determined by Tris-Bis PAGE;> 95% as determined by HPLC

 Tel: 1-631-559-9269 1-516-512-3133

 Email: info@creative-biomart.com  Fax: 1-631-938-8127

 45-1 Ramsey Road, Shirley, NY 11967, USA

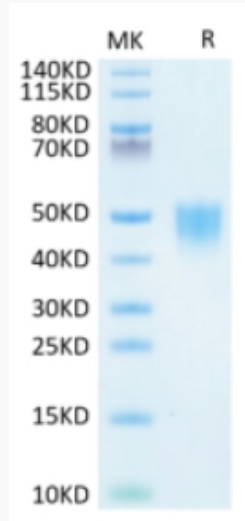
Storage	Reconstituted protein stable at -80°C for 12 months, 4°C for 1 week. Use a manual defrost freezer and avoid repeated freeze-thaw cycles.
Reconstitution	Centrifuge tubes before opening. Reconstituting to a concentration more than 100 µg/ml is recommended. Dissolve the lyophilized protein in distilled water.
GENE INFORMATION	
Gene Name	CD200 CD200 molecule [Homo sapiens]
Official Symbol	CD200
Synonyms	CD200; CD200 molecule; antigen identified by monoclonal MRC OX 2 , CD200 antigen , MOX1, MOX2; OX-2 membrane glycoprotein; MRC; OX 2; CD200 antigen; MRC OX-2 antigen; antigen identified by monoclonal MRC OX-2; MOX1; MOX2; OX-2;
Gene ID	4345
mRNA Refseq	NM_001004196
Protein Refseq	NP_001004196
MIM	155970
UniProt ID	P41217

 Tel: 1-631-559-9269 1-516-512-3133

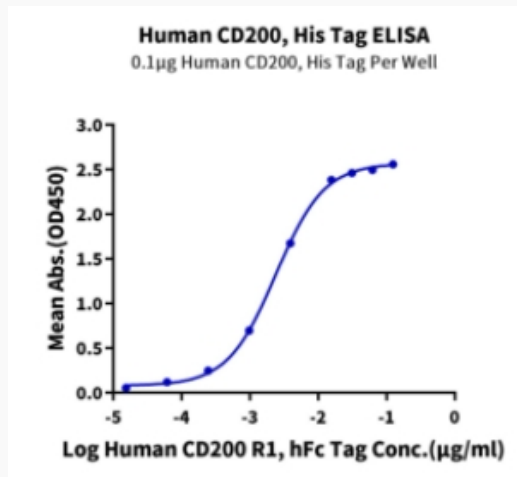
 Email: info@creative-biomart.com  Fax: 1-631-938-8127

 45-1 Ramsey Road, Shirley, NY 11967, USA

Tris-Bis PAGE



ELISA Data



 Tel: 1-631-559-9269 1-516-512-3133

 Email: info@creative-biomart.com  Fax: 1-631-938-8127

 45-1 Ramsey Road, Shirley, NY 11967, USA