

# Recombinant Human CD200 protein, His-SUMO&Myc-tagged

**Cat. No.** CD200-366H    **Lot. No.** (See product label)

## SPECIFICATION

<b>Product Overview</b>	Recombinant Human CD200 protein(P41217)(31-232aa), fused with N-terminal His tag and SUMO tag and C-terminal Myc tag, was expressed in E.coli.
<b>Species</b>	Human
<b>Source</b>	E.coli
<b>ProteinLength</b>	31-232aa
<b>Form</b>	If the delivery form is liquid, the default storage buffer is Tris/PBS-based buffer, 5%-50% glycerol. If the delivery form is lyophilized powder, the buffer before lyophilization is Tris/PBS-based buffer, 6% Trehalose, pH 8.0.
<b>Molecular Mass</b>	35.4 kDa
<b>Purity</b>	Greater than 90% as determined by SDS-PAGE.
<b>Storage</b>	Store at -20°C/-80°C upon receipt, aliquoting is necessary for mutiple use. Avoid repeated freeze-thaw cycles.
<b>Reconstitution</b>	We recommend that this vial be briefly centrifuged prior to opening to bring the contents to the bottom. Please reconstitute protein in deionized sterile water to a concentration of 0.1-1.0 mg/mL. We recommend to add 5-50% of glycerol (final concentration) and aliquot for long-term storage at -20°C/-80°C.

 Tel: 1-631-559-9269    1-516-512-3133

 Email: [info@creative-biomart.com](mailto:info@creative-biomart.com)     Fax: 1-631-938-8127

 45-1 Ramsey Road, Shirley, NY 11967, USA

**AA Sequence**

QVQVVTQDEREQLYTPASLKCSLQNAQEALIVTWQKKKAVSPENMVTFSENHGVVI  
 QPAYKDKINITQLGLQNSTITFWNITLEDEGCYMCLFNTFGFGKISGTACLTVYVQPIV  
 SLHYKFSEDHLNITCSATARPAPMVFWKVPRSGIENSTVTLSHPNGTTSVTSILHIKD  
 PKNQVGKEVICQVLHLGTVTDFKQTVNKG

**GENE INFORMATION**

**Gene Name** [CD200 CD200 molecule \[ Homo sapiens \]](#)

**Official Symbol** [CD200](#)

**Synonyms**

CD200; CD200 molecule; antigen identified by monoclonal MRC OX 2 , CD200  
 antigen , MOX1, MOX2; OX-2 membrane glycoprotein; MRC; OX 2; CD200 antigen;  
 MRC OX-2 antigen; antigen identified by monoclonal MRC OX-2; MOX1; MOX2; OX-  
 2;

**Gene ID** [4345](#)

**mRNA Refseq** [NM\\_001004196](#)

**Protein Refseq** [NP\\_001004196](#)

**MIM** [155970](#)

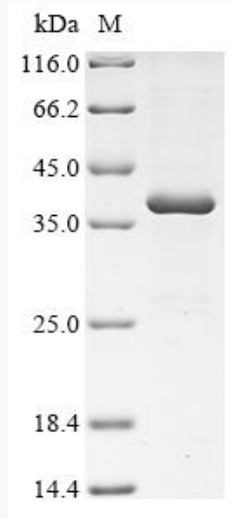
**UniProt ID** [P41217](#)


 Tel: 1-631-559-9269 1-516-512-3133

 Email: [info@creative-biomart.com](mailto:info@creative-biomart.com)  Fax: 1-631-938-8127

 45-1 Ramsey Road, Shirley, NY 11967, USA

**SDS-PAGE**



 Tel: 1-631-559-9269 1-516-512-3133

 Email: [info@creative-biomart.com](mailto:info@creative-biomart.com)  Fax: 1-631-938-8127

 45-1 Ramsey Road, Shirley, NY 11967, USA