

Recombinant Human CD200 protein, Fc-His-tagged

Cat. No. CD200-629H **Lot. No.** (See product label)

SPECIFICATION

Product Overview	Recombinant Human CD200 protein(NP_005935.4)(Met 1-Gly 232) was expressed in HEK293, fused with the C-terminal polyhistidine-tagged Fc region of human IgG1 at the C-terminus.
Species	Human
Source	HEK293
ProteinLength	1-232 aa
Form	Lyophilized from sterile PBS, pH 7.4.
Bio-activity	Measured by its binding ability in a functional ELISA. Immobilized human CD200R1 at 1 µg/ml (100 µl/well) can bind human CD200 Fc Chimera with a linear range of 0.12-16 ng/ml.
Molecular Mass	The recombinant human CD200/Fc is a disulfide-linked homodimer. The reduced monomer consists of 450 amino acids and has a predicted molecular mass of 50.5 kDa. As a result of glycosylation, the apparent molecular mass of rh CD200/Fc monomer is approximately 65-70 kDa in SDS-PAGE under reducing conditions.
Endotoxin	< 1.0 EU per µg of the protein as determined by the LAL method.
Purity	> 95 % as determined by SDS-PAGE

 Tel: 1-631-559-9269 1-516-512-3133

 Email: info@creative-biomart.com  Fax: 1-631-938-8127

 45-1 Ramsey Road, Shirley, NY 11967, USA

Storage	Store it under sterile conditions at -20°C to -80°C upon receiving. Recommend to aliquot the protein into smaller quantities for optimal storage. Avoid repeated freeze-thaw cycles.
Reconstitution	It is recommended that sterile water be added to the vial to prepare a stock solution of 0.2 ug/ul. Centrifuge the vial at 4°C before opening to recover the entire contents.
protein Refseq-Weblink	http://www.ncbi.nlm.nih.gov/protein/NP_001004196.2
Unit ID	P41217
Unit ID-Weblink	http://www.uniprot.org/uniprot/P41217

GENE INFORMATION

Gene Name	CD200 CD200 molecule [Homo sapiens]
Official Symbol	CD200
Synonyms	CD200; CD200 molecule; antigen identified by monoclonal MRC OX 2 , CD200 antigen , MOX1, MOX2; OX-2 membrane glycoprotein; MRC; OX 2; CD200 antigen; MRC OX-2 antigen; antigen identified by monoclonal MRC OX-2; MOX1; MOX2; OX-2;
Gene ID	4345
mRNA Refseq	NM_001004196
protein Refseq	NP_001004196

 Tel: 1-631-559-9269 1-516-512-3133

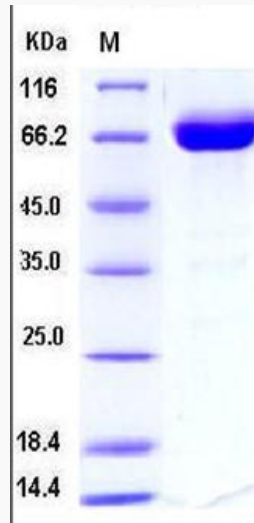
 Email: info@creative-biomart.com  Fax: 1-631-938-8127


 45-1 Ramsey Road, Shirley, NY 11967, USA

MIM


155970

SDS-PAGE



 Tel: 1-631-559-9269 1-516-512-3133

 Email: info@creative-biomart.com  Fax: 1-631-938-8127

 45-1 Ramsey Road, Shirley, NY 11967, USA