

Active Recombinant Human CD200R1 Protein, hlgG-His-Tagged

Cat. No. CD200R1-01H Lot. No. (See product label)

SPECIFICATION

Product Overview	Recombinant Human CD200R1 Protein, hlgG-His-Tagged was expressed in Baculovirus cell line.
Species	Human
Source	Insect Cells
ProteinLength	462aa
Description	<p>This gene encodes a receptor for the OX-2 membrane glycoprotein. Both the receptor and substrate are cell surface glycoproteins containing two immunoglobulin-like domains. This receptor is restricted to the surfaces of myeloid lineage cells and the receptor-substrate interaction may function as a myeloid downregulatory signal. Mouse studies of a related gene suggest that this interaction may control myeloid function in a tissue-specific manner. Alternative splicing of this gene results in multiple transcript variants. [provided by RefSeq, Jul 2008]</p> <p>Expression Broad expression in spleen</p>
Form	Liquid
Bio-activity	Measured by its binding ability in a functional ELISA with Human CD200 (CAT# ATGP4013). The ED50 range ≤ 1 ug/ml.

 Tel: 1-631-559-9269 1-516-512-3133

 Email: info@creative-biomart.com  Fax: 1-631-938-8127

 45-1 Ramsey Road, Shirley, NY 11967, USA

Molecular Mass	51.9 kDa
Endotoxin	< 1 EU per 1ug of protein (determined by LAL method)
Purity	> 90% by SDS-PAGE
Applications	SDS-PAGE, Bioactivity
Notes	Note: For research use only. This product is not intended or approved for human, diagnostics or veterinary use.
Storage	Can be stored at +2C to +8C for 1 week. For long term storage, aliquot and store at -20C to -80C. Avoid repeated freezing and thawing cycles.
Concentration	0.25mg/ml (determined by absorbance at 280nm)
Storage Buffer	Liquid in. Phosphate-Buffered Saline (pH 7.4) containing 10% glycerol

GENE INFORMATION

Gene Name	CD200R1 CD200 receptor 1 [Homo sapiens (human)]
Official Symbol	CD200R1
Synonyms	Cell surface glycoprotein CD200 receptor 1 isoform d, CD200R1, CD200R, HCRTR2, MOX2R, OX2R
Gene ID	131450
mRNA Refseq	NM_170780.3

 Tel: 1-631-559-9269 1-516-512-3133

 Email: info@creative-biomart.com  Fax: 1-631-938-8127

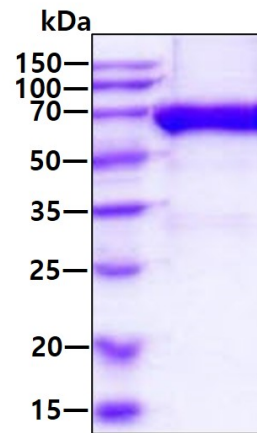
 45-1 Ramsey Road, Shirley, NY 11967, USA

Protein Refseq NP_740750.1

MIM 607546

UniProt ID Q8TD46

SDS-PAGE



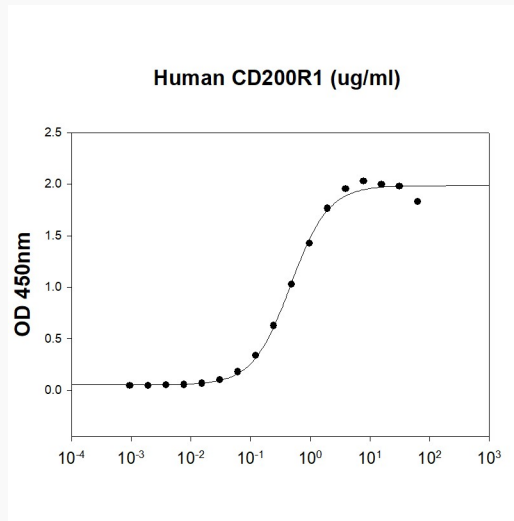
3ug by SDS-PAGE under reducing condition and visualized by coomassie blue stain

 Tel: 1-631-559-9269 1-516-512-3133

 Email: info@creative-biomart.com  Fax: 1-631-938-8127

 45-1 Ramsey Road, Shirley, NY 11967, USA

Biological Activity



CD200 is coated at 10 ug/ml (100 ul/well) can bind Human CD200R1. The ED50 range \leq 1 ug/ml.

 Tel: 1-631-559-9269 1-516-512-3133

 Email: info@creative-biomart.com  Fax: 1-631-938-8127

 45-1 Ramsey Road, Shirley, NY 11967, USA