

# Recombinant Human CD200 receptor 1 Protein, His&Flag tagged

Cat. No. CD200R1-043H Lot. No. (See product label)

## SPECIFICATION

<b>Product Overview</b>	Recombinant human CD200R1 protein (Q8TD46) (Met 29-Leu 243) with both His, Flag tag at the C-terminus was expressed in HEK293.
<b>Species</b>	Human
<b>Source</b>	HEK293
<b>ProteinLength</b>	29-243aa
<b>Description</b>	Inhibitory receptor for the CD200/OX2 cell surface glycoprotein. Limits inflammation by inhibiting the expression of pro-inflammatory molecules including TNF-alpha, interferons, and inducible nitric oxide synthase (iNOS) in response to selected stimuli. Also binds to HHV-8 K14 viral CD200 homolog with identical affinity and kinetics as the host CD200.
<b>Tag</b>	C-His&Flag
<b>Molecular Mass</b>	26.9 kDa
<b>Endotoxin</b>	Less than 1.0 EU/μg by the LAL method.
<b>Purity</b>	>95% as determined by SDS-PAGE.
<b>Storage</b>	Please avoid repeated freeze-thaw cycles. Samples are stable for up to twelve

 Tel: 1-631-559-9269 1-516-512-3133

 Email: [info@creative-biomart.com](mailto:info@creative-biomart.com)  Fax: 1-631-938-8127

 45-1 Ramsey Road, Shirley, NY 11967, USA

months from date of receipt at -20 to -80 centigrade. It is recommended that aliquot the reconstituted solution to minimize freeze-thaw cycles.

**Storage Buffer**

Lyophilized from a 0.2 µm filtered solution of PBS, pH7.4, 5% Trehalose, 5% mannitol.

**Reconstitution**

Reconstitute at 250 µg/mL in sterile water.

## GENE INFORMATION

**Gene Name**

CD200R1 CD200 receptor 1 [ Homo sapiens (human) ]

**Official Symbol**

CD200R1

**Synonyms**

CD200R1; CD200 receptor 1; MOX2 receptor, MOX2R; cell surface glycoprotein CD200 receptor 1; CD200R; HCRTR2; OX2R; MOX2 receptor; CD200 cell surface glycoprotein receptor; cell surface glycoprotein OX2 receptor 1; cell surface glycoprotein receptor CD200; MOX2R;

**Gene ID**

131450

**mRNA Refseq**

NM\_138806

**Protein Refseq**

NP\_620161

**MIM**

607546

**UniProt ID**

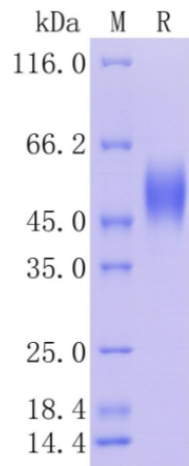
Q8TD46

 Tel: 1-631-559-9269 1-516-512-3133

 Email: [info@creative-biomart.com](mailto:info@creative-biomart.com)  Fax: 1-631-938-8127

 45-1 Ramsey Road, Shirley, NY 11967, USA

**Protein on SDS-  
PAGE under  
reducing (R)  
condition.**



 Tel: 1-631-559-9269 1-516-512-3133

 Email: [info@creative-biomart.com](mailto:info@creative-biomart.com)  Fax: 1-631-938-8127

 45-1 Ramsey Road, Shirley, NY 11967, USA