

## Recombinant Human CD200R1, GST-tagged

**Cat. No.** CD200R1-27295TH **Lot. No.** (See product label)

### SPECIFICATION

**Product Overview** Human CD200R1 full-length ORF ( NP\_620161.1, 1 a.a. - 348 a.a.) recombinant protein with GST-tag at N-terminal.

**Species** Human

**Source** Wheat Germ

**Description** This gene encodes a receptor for the OX-2 membrane glycoprotein. Both the receptor and substrate are cell surface glycoproteins containing two immunoglobulin-like domains. This receptor is restricted to the surfaces of myeloid lineage cells and the receptor-substrate interaction may function as a myeloid downregulatory signal. Mouse studies of a related gene suggest that this interaction may control myeloid function in a tissue-specific manner. Alternative splicing of this gene results in multiple transcript variants.

**Form** 50 mM Tris-HCl, 10 mM reduced Glutathione, pH=8.0 in the elution buffer

**Molecular Mass** 65.4 kDa

**AA Sequence**

```
MLCPWRTANLGLLLILTIFLVAEAEGAAQPNNLMLQTSKENHALASSSLCMDEKQIT
QNYSKVLAEVNTSWPVKMATNAVLCCPPIALRNLIITWEIILRGQPSTKAYKKETNE
TKETNCTDERITWVSRPDQNSDLQIRTVAITHDGYRCIMVTPDGNFHRGYHLQVLV
TPEVTLFQNRNRTAVCKAVAGKPAAHISWIPEGDCATKQEYWSNGTVTVKSTCHWE
VHNVSTVTCHVSHLTGNKSLYIELLPVPGAKKSAKLYIPYIILTIILTVGFIWLLKVNGC
RKYKLNKTESTPVVEEDEMOPYASYTEKNNPLYDTTNKVKASEALQSEVDTLHTL
```

 Tel: 1-631-559-9269 1-516-512-3133

 Email: [info@creative-biomart.com](mailto:info@creative-biomart.com)  Fax: 1-631-938-8127

 45-1 Ramsey Road, Shirley, NY 11967, USA

|                      |  |
|----------------------|--|
| <b>Applications</b>  | AP; Array; ELISA; WB-Re  |
| <b>Notes</b>         | Best use with three months from the date of receipt of this protein.     |
| <b>Storage</b>       | Store at -80 centigrade. Aliquot to avoid repeated freezing and thawing. |
| <b>Concentration</b> | 0.03 µg/µL   |

## GENE INFORMATION

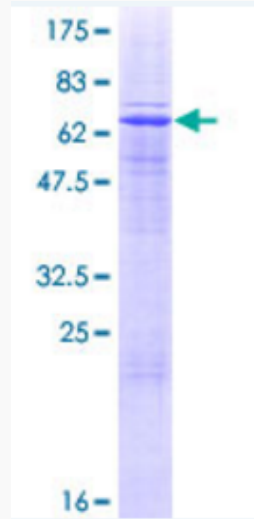
|                        |   |
|------------------------|---|
| <b>Gene Name</b>       | CD200 receptor 1 [ Homo sapiens (human) ] |
| <b>Official Symbol</b> | CD200R1                                   |
| <b>Synonyms</b>        | CD200R; HCRTR2; MOX2R; OX2R               |
| <b>Gene ID</b>         | 131450                                    |
| <b>mRNA Refseq</b>     | NM_138806.3                               |
| <b>Protein Refseq</b>  | NP_620161.1                               |
| <b>MIM</b>             | 607546                                    |
| <b>UniProt ID</b>      | Q8TD46                                    |

 Tel: 1-631-559-9269 1-516-512-3133

 Email: [info@creative-biomart.com](mailto:info@creative-biomart.com)  Fax: 1-631-938-8127

 45-1 Ramsey Road, Shirley, NY 11967, USA

**12.5% SDS-PAGE**  
**Stained with**  
**Coomassie Blue**



 Tel: 1-631-559-9269 1-516-512-3133

 Email: [info@creative-biomart.com](mailto:info@creative-biomart.com)  Fax: 1-631-938-8127

 45-1 Ramsey Road, Shirley, NY 11967, USA