

Recombinant Human CD200R1 protein, His-Avi-tagged, Biotinylated

Cat. No. CD200R1-277H Lot. No. (See product label)

SPECIFICATION

Product Overview	Biotinylated Recombinant Human CD200R1 protein(AAQ19772)(Ala27-Leu266), fused with C-terminal His and Avi tag, was expressed in HEK293.
Species	Human
Source	HEK293
ProteinLength	Ala27-Leu266
Tag	C-His-Avi
Conjugation/Label	Biotin
Form	Lyophilized from 0.22µm filtered solution in PBS (pH 7.4). Normally 5% trehalose is added as protectant before lyophilization.
Bio-activity	Immobilized Biotinylated Human CD200 R1, His Tag at 1ug/ml (100ul/well) on the streptavidin precoated plate (5ug/ml). Dose response curve for Human CD200, hFc Tag with the EC50 of 2.2ng/ml determined by ELISA.
Molecular Mass	The protein has a predicted MW of 29.7 kDa. Due to glycosylation, the protein migrates to 52-70 kDa based on Tris-Bis PAGE result.
Endotoxin	Less than 1EU per µg by the LAL method.

 Tel: 1-631-559-9269 1-516-512-3133

 Email: info@creative-biomart.com  Fax: 1-631-938-8127

 45-1 Ramsey Road, Shirley, NY 11967, USA

Purity	> 95% as determined by Tris-Bis PAGE;> 95% as determined by HPLC
Storage	Reconstituted protein stable at -80°C for 12 months, 4°C for 1 week. Use a manual defrost freezer and avoid repeated freeze-thaw cycles.
Reconstitution	Centrifuge tubes before opening. Reconstituting to a concentration more than 100 µg/ml is recommended. Dissolve the lyophilized protein in distilled water.
Conjugation	Biotin

GENE INFORMATION

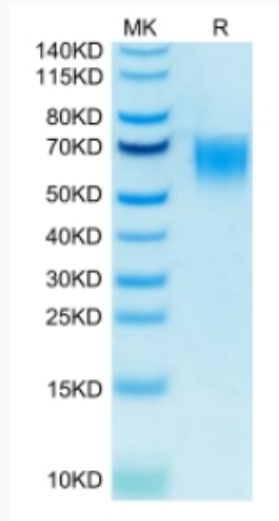
Gene Name	CD200R1 CD200 receptor 1 [Homo sapiens]
Official Symbol	CD200R1
Synonyms	CD200R1; CD200 receptor 1; MOX2 receptor , MOX2R; cell surface glycoprotein CD200 receptor 1; CD200R; HCRTR2; OX2R; MOX2 receptor; CD200 cell surface glycoprotein receptor; cell surface glycoprotein OX2 receptor 1; cell surface glycoprotein receptor CD200; MOX2R;
Gene ID	131450
mRNA Refseq	NM_138806
Protein Refseq	NP_620161
MIM	607546
UniProt ID	Q8TD46

 Tel: 1-631-559-9269 1-516-512-3133

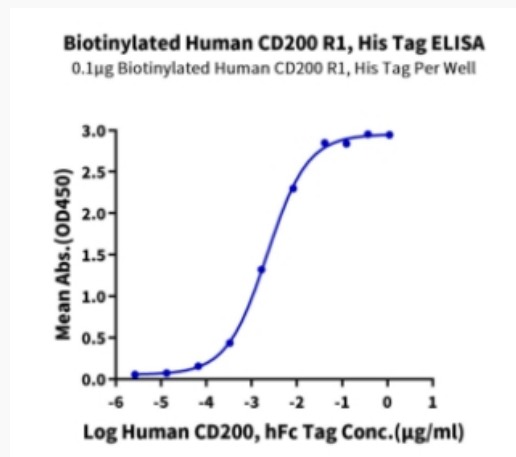
 Email: info@creative-biomart.com  Fax: 1-631-938-8127

 45-1 Ramsey Road, Shirley, NY 11967, USA

Tris-Bis PAGE



ELISA Data



 Tel: 1-631-559-9269 1-516-512-3133

 Email: info@creative-biomart.com  Fax: 1-631-938-8127

 45-1 Ramsey Road, Shirley, NY 11967, USA