

## Active Recombinant Human CD200R1 protein, His-tagged

Cat. No. CD200R1-3202H Lot. No. (See product label)

### SPECIFICATION

<b>Product Overview</b>	Active Recombinant Human CD200R1 protein(AAI43394.1)(Met 1-Leu 266) was expressed in HEK293, fused with a polyhistidine tag at the C-terminus.
<b>Species</b>	Human
<b>Source</b>	HEK293
<b>ProteinLength</b>	1-266 aa
<b>Form</b>	Lyophilized from sterile PBS, pH 7.4.
<b>Bio-activity</b>	Measured by its binding ability in a functional ELISA. Immobilized human CD200R1 at 1 µg/ml (100 µl/well) can bind human CD200 with a linear range of 0.12-16 ng/ml.
<b>Molecular Mass</b>	The secreted recombinant human CD200R1 comprises 251 amino acids after removal of the signal peptide and has a predicted molecular mass of 28.2 kDa. As a result of glycosylation, rh CD200R1 migrates as an approximately 50-60 kDa band in SDS-PAGE under reducing conditions.
<b>Endotoxin</b>	< 1.0 EU per µg of the protein as determined by the LAL method.
<b>Purity</b>	> 98 % as determined by SDS-PAGE
<b>Storage</b>	Store it under sterile conditions at -20°C to -80°C upon receiving. Recommend to aliquot the protein into smaller quantities for optimal storage. Avoid repeated freeze-

 Tel: 1-631-559-9269 1-516-512-3133

 Email: [info@creative-biomart.com](mailto:info@creative-biomart.com)  Fax: 1-631-938-8127

 45-1 Ramsey Road, Shirley, NY 11967, USA

thaw cycles.

**Reconstitution**

It is recommended that sterile water be added to the vial to prepare a stock solution of 0.2 ug/ul. Centrifuge the vial at 4°C before opening to recover the entire contents.

**protein Refseq-Weblink**

[http://www.ncbi.nlm.nih.gov/protein/NP\\_620161.1](http://www.ncbi.nlm.nih.gov/protein/NP_620161.1)

**Unit ID**

Q8TD46

**Unit ID-Weblink**

<https://www.uniprot.org/uniprotkb/Q8TD46>

## GENE INFORMATION

**Gene Name**

CD200R1 CD200 receptor 1 [ Homo sapiens ]

**Official Symbol**

CD200R1

**Synonyms**

CD200R1; CD200 receptor 1; MOX2 receptor, MOX2R; cell surface glycoprotein CD200 receptor 1; CD200R; HCRTR2; OX2R; MOX2 receptor; CD200 cell surface glycoprotein receptor; cell surface glycoprotein OX2 receptor 1; cell surface glycoprotein receptor CD200; MOX2R;

**Gene ID**

131450

**mRNA Refseq**

NM\_138806

**protein Refseq**

NP\_620161

**MIM**

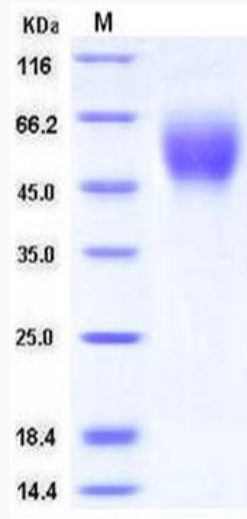
607546

 Tel: 1-631-559-9269 1-516-512-3133

 Email: [info@creative-biomart.com](mailto:info@creative-biomart.com)  Fax: 1-631-938-8127

 45-1 Ramsey Road, Shirley, NY 11967, USA

**SDS-PAGE**



 Tel: 1-631-559-9269 1-516-512-3133

 Email: [info@creative-biomart.com](mailto:info@creative-biomart.com)  Fax: 1-631-938-8127

 45-1 Ramsey Road, Shirley, NY 11967, USA