

## Recombinant Human CD200R1 protein, hFc-Myc-His-tagged

**Cat. No.** CD200R1-3717H    **Lot. No.** (See product label)

### SPECIFICATION

<b>Product Overview</b>	Recombinant Human CD200R1 protein(NP_620161.1)(Ala27-Leu266), fused with C-terminal hFc, Myc and His tag, was expressed in HEK293.
<b>Species</b>	Human
<b>Source</b>	HEK293
<b>Form</b>	Lyophilized from 0.22 µm filtered solution in PBS, pH 7.4. Normally 5% trehalose and 5% mannitol are added as protectants before lyophilization.
<b>Bio-activity</b>	Immobilized Human CD200 (Myc tag, His tag) at 2 µg/mL (100 µL/well) can bind Human CD200R1 (hFc tag, Myc tag, His tag) with a linear range of 3-10 ng/mL.
<b>Molecular Mass</b>	55.3 kDa
<b>Endotoxin</b>	<0.1 EU/µg protein, LAL method
<b>Purity</b>	>95 %, SDS-PAGE
<b>Storage</b>	It is recommended that the protein be aliquoted for optimal storage. Avoid repeated freeze-thaw cycles. Until expiry date, -20°C to -80°C as lyophilized proteins. 3 months, -20°C to -80°C under sterile conditions after reconstitution.
<b>Reconstitution</b>	Briefly centrifuge the tube before opening. Reconstitute at 0.1-0.5 mg/mL in sterile water.

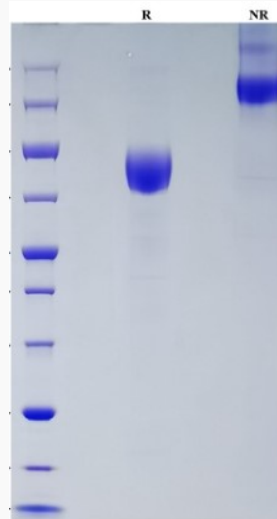
 Tel: 1-631-559-9269    1-516-512-3133

 Email: [info@creative-biomart.com](mailto:info@creative-biomart.com)     Fax: 1-631-938-8127

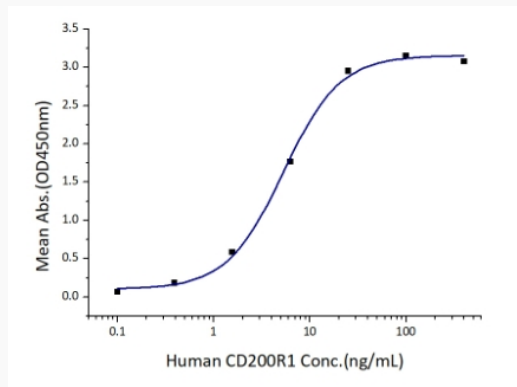
 45-1 Ramsey Road, Shirley, NY 11967, USA

**GENE INFORMATION****Gene Name** CD200R1 CD200 receptor 1 [ Homo sapiens ]**Official Symbol** CD200R1**Synonyms** CD200R1; CD200 receptor 1; MOX2 receptor , MOX2R; cell surface glycoprotein CD200 receptor 1; CD200R; HCRTR2; OX2R; MOX2 receptor; CD200 cell surface glycoprotein receptor; cell surface glycoprotein OX2 receptor 1; cell surface glycoprotein receptor CD200; MOX2R;**Gene ID** 131450**mRNA Refseq** NM\_138806**Protein Refseq** NP\_620161**MIM** 607546**UniProt ID** Q8TD46 Tel: 1-631-559-9269 1-516-512-3133 Email: [info@creative-biomart.com](mailto:info@creative-biomart.com)  Fax: 1-631-938-8127 45-1 Ramsey Road, Shirley, NY 11967, USA

**SDS-PAGE**



**Activity**



 Tel: 1-631-559-9269 1-516-512-3133

 Email: [info@creative-biomart.com](mailto:info@creative-biomart.com)  Fax: 1-631-938-8127

 45-1 Ramsey Road, Shirley, NY 11967, USA