

## Active Recombinant Human CD200R1 protein, hFc-tagged

Cat. No. CD200R1-495H Lot. No. (See product label)

### SPECIFICATION

<b>Product Overview</b>	Recombinant Human CD200R1 protein(Q8TD46)(Met29-Leu-243), fused with hFc tag, was expressed in HEK293.
<b>Species</b>	Human
<b>Source</b>	HEK293
<b>ProteinLength</b>	Met29-Leu-243
<b>Form</b>	Lyophilized from 0.22 µm filtered solution in PBS, pH7.4.
<b>Bio-activity</b>	When Recombinant Human CD200/ His Protein is immobilized at 5g/mL (100 µ/well), the concentration of Recombinant Human CD200R1/hFC Protein that produces 50% of the optimal binding response is approximately 0.17 ug/ml.
<b>Molecular Mass</b>	The protein has a calculated MW of 50kDa.The reducing (R) heterodimer protein migrates as 70-90 kDa due to glycosylation
<b>Endotoxin</b>	<1EU/mg
<b>Purity</b>	SDS-PAGE>90%SEC>95%
<b>Storage</b>	Store at -20°C.
<b>Reconstitution</b>	sterile H48O

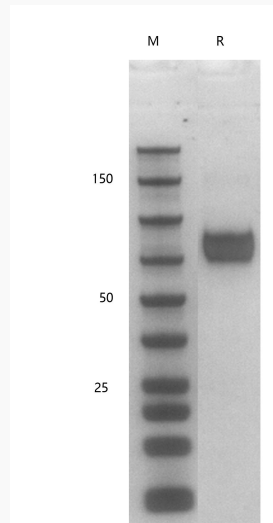
 Tel: 1-631-559-9269 1-516-512-3133

 Email: [info@creative-biomart.com](mailto:info@creative-biomart.com)  Fax: 1-631-938-8127

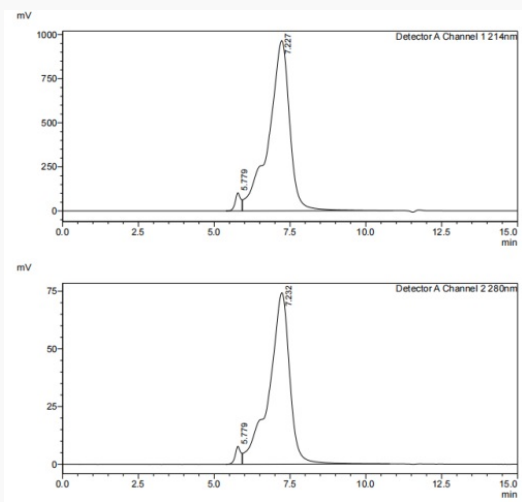
 45-1 Ramsey Road, Shirley, NY 11967, USA

**GENE INFORMATION****Gene Name** CD200R1 CD200 receptor 1 [ Homo sapiens ]**Official Symbol** CD200R1**Synonyms** CD200R1; CD200 receptor 1; MOX2 receptor, MOX2R; cell surface glycoprotein CD200 receptor 1; CD200R; HCRTR2; OX2R; MOX2 receptor; CD200 cell surface glycoprotein receptor; cell surface glycoprotein OX2 receptor 1; cell surface glycoprotein receptor CD200; MOX2R;**Gene ID** 131450**mRNA Refseq** NM\_138806**Protein Refseq** NP\_620161**MIM** 607546**UniProt ID** Q8TD46 Tel: 1-631-559-9269 1-516-512-3133 Email: [info@creative-biomart.com](mailto:info@creative-biomart.com)  Fax: 1-631-938-8127 45-1 Ramsey Road, Shirley, NY 11967, USA

**SDS-PAGE**



**SDS-HPLC**

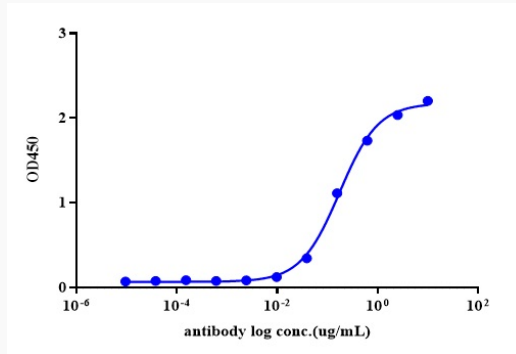


 Tel: 1-631-559-9269 1-516-512-3133

 Email: [info@creative-biomart.com](mailto:info@creative-biomart.com)  Fax: 1-631-938-8127

 45-1 Ramsey Road, Shirley, NY 11967, USA

ELISA



 Tel: 1-631-559-9269 1-516-512-3133

 Email: [info@creative-biomart.com](mailto:info@creative-biomart.com)  Fax: 1-631-938-8127

 45-1 Ramsey Road, Shirley, NY 11967, USA