

Recombinant Human CD200R1 protein, His-Avi-tagged

Cat. No. CD200R1-5744H **Lot. No.** (See product label)

SPECIFICATION

Product Overview	Recombinant Human CD200R1 protein(AAQ19772)(Ala27-Leu266), fused with C-terminal His and Avi tag, was expressed in HEK293.
Species	Human
Source	HEK293
ProteinLength	Ala27-Leu266
Tag	C-His-Avi
Form	Lyophilized from 0.22µm filtered solution in PBS (pH 7.4). Normally 5% trehalose is added as protectant before lyophilization.
Bio-activity	Immobilized Human CD200 R1, His Tag at 2µg/ml (100ul/Well) on the plate. Dose response curve for Human CD200, hFc Tag with the EC50 of 0.77ng/ml determined by ELISA.
Molecular Mass	The protein has a predicted MW of 29.7 kDa. Due to glycosylation, the protein migrates to 52-70 kDa based on Tris-Bis PAGE result.
Endotoxin	Less than 1EU per µg by the LAL method.
Purity	> 95% as determined by Tris-Bis PAGE;> 95% as determined by HPLC

 Tel: 1-631-559-9269 1-516-512-3133

 Email: info@creative-biomart.com  Fax: 1-631-938-8127

 45-1 Ramsey Road, Shirley, NY 11967, USA

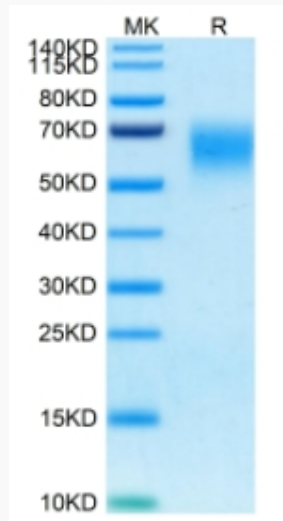
Storage	Reconstituted protein stable at -80°C for 12 months, 4°C for 1 week. Use a manual defrost freezer and avoid repeated freeze-thaw cycles.
Reconstitution	Centrifuge tubes before opening. Reconstituting to a concentration more than 100 µg/ml is recommended. Dissolve the lyophilized protein in distilled water.
GENE INFORMATION	
Gene Name	CD200R1 CD200 receptor 1 [Homo sapiens]
Official Symbol	CD200R1
Synonyms	CD200R1; CD200 receptor 1; MOX2 receptor , MOX2R; cell surface glycoprotein CD200 receptor 1; CD200R; HCRTR2; OX2R; MOX2 receptor; CD200 cell surface glycoprotein receptor; cell surface glycoprotein OX2 receptor 1; cell surface glycoprotein receptor CD200; MOX2R;
Gene ID	131450
mRNA Refseq	NM_138806
Protein Refseq	NP_620161
MIM	607546
UniProt ID	Q8TD46

 Tel: 1-631-559-9269 1-516-512-3133

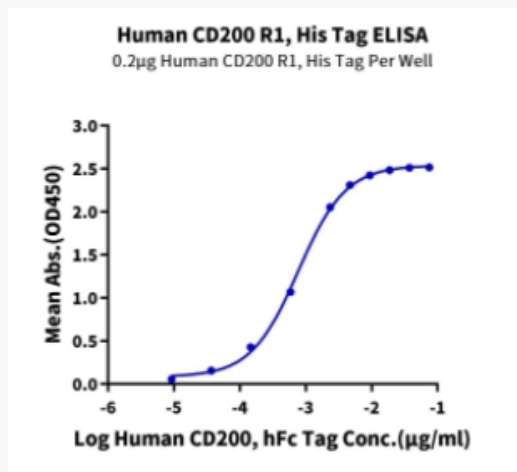
 Email: info@creative-biomart.com  Fax: 1-631-938-8127

 45-1 Ramsey Road, Shirley, NY 11967, USA

Tris-Bis PAGE



ELISA Data



Tel: 1-631-559-9269 1-516-512-3133

Email: info@creative-biomart.com Fax: 1-631-938-8127

45-1 Ramsey Road, Shirley, NY 11967, USA