

Recombinant Rhesus macaque CD22 protein, His-tagged

Cat. No. CD22-1212R **Lot. No.** (See product label)

SPECIFICATION

Product Overview	Recombinant Rhesus macaque CD22 (Ser20-Arg686) protein was fused to His-tag at C-terminus and expressed in human 293 cells (HEK293).
Species	Rhesus macaque
Source	HEK293
ProteinLength	Ser20-Arg686
Description	B-cell receptor CD22 is also known as Sialic acid-binding Ig-like lectin 2 (Siglec-2), B-lymphocyte cell adhesion molecule (BL-CAM), T-cell surface antigen Leu-14, which belongs to the immunoglobulin superfamily and SIGLEC (sialic acid binding Ig-like lectin) family. CD22 mediates B-cell B-cell interactions, and may be involved in the localization of B-cells in lymphoid tissues. Siglec-2/CD22 binds sialylated glycoproteins, one of which is CD45. Siglec2/CD22 plays a role in positive regulation through interaction with Src family tyrosine kinases and may also act as an inhibitory receptor by recruiting cytoplasmic phosphatases via their SH2 domains that block signal transduction through dephosphorylation of signaling molecules.
Predicted N Terminal	Ser20
Form	Lyophilized from 0.22 µm filtered solution in PBS, pH7.4, 10% trehalose.
Molecular Mass	The protein has a calculated MW of 76.9 kDa. The protein migrates as 95-120 KDa under reducing (R) condition (SDS-PAGE) due to glycosylation.

 Tel: 1-631-559-9269 1-516-512-3133

 Email: info@creative-biomart.com  Fax: 1-631-938-8127

 45-1 Ramsey Road, Shirley, NY 11967, USA

Endotoxin	Less than 1.0 EU per µg by the LAL method.
Purity	>95% as determined by SDS-PAGE.
Storage	<p>For long term storage, the product should be stored at lyophilized state at -20 centigrade or lower.</p> <p>Please avoid repeated freeze-thaw cycles.</p> <p>This product is stable after storage at:</p> <p>-20 to -70 centigrade for 12 months in lyophilized state; -70 centigrade for 3 months under sterile conditions after reconstitution.</p>
Reconstitution	It is recommended that sterile water be added to the vial to prepare a stock solution of 0.2 ug/ul. Centrifuge the vial at 4°C before opening to recover the entire contents.

GENE INFORMATION

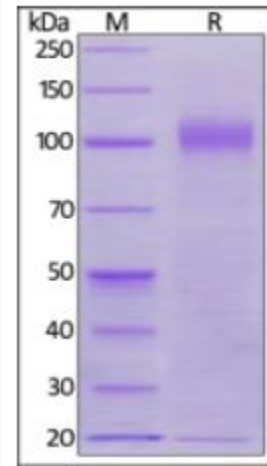
Gene Name	CD22
Official Symbol	CD22
Synonyms	SIGLEC2; SIGLEC-2
Gene ID	106994739
mRNA Refseq	XM_028838741.1
Protein Refseq	XP_028694574.1

 Tel: 1-631-559-9269 1-516-512-3133

 Email: info@creative-biomart.com  Fax: 1-631-938-8127

 45-1 Ramsey Road, Shirley, NY 11967, USA

SDS-PAGE of CD22-1212R



Rhesus macaque Siglec-2 on SDS-PAGE under reducing (R) condition. The gel was stained overnight with Coomassie Blue. The purity of the protein is greater than 95%.

 Tel: 1-631-559-9269 1-516-512-3133

 Email: info@creative-biomart.com  Fax: 1-631-938-8127

 45-1 Ramsey Road, Shirley, NY 11967, USA