

## Recombinant Human CD22 Protein (Trp176-Ala330), N-His tagged

Cat. No. CD22-1411H Lot. No. (See product label)

### SPECIFICATION

<b>Product Overview</b>	Recombinant Human CD22 (Trp176-Ala330) fused with the N-His tag was expressed in E. coli.
<b>Species</b>	Human
<b>Source</b>	E.coli
<b>ProteinLength</b>	Trp176-Ala330
<b>Form</b>	Lyophilized powder/frozen liquid
<b>Molecular Mass</b>	19.57 kDa
<b>Purity</b>	>90% as determined by SDS-PAGE.
<b>Notes</b>	For research use only.
<b>Storage</b>	Use a manual defrost freezer and avoid repeated freeze thaw cycles. Store at 2 to 8 centigrade for one week. Store at -20 to -80 centigrade for twelve months from the date of receipt.
<b>Storage Buffer</b>	0.01M PBS, pH 7.4, 0.02% NLS
<b>Reconstitution</b>	Reconstitute in sterile water for a stock solution.

 Tel: 1-631-559-9269 1-516-512-3133

 Email: [info@creative-biomart.com](mailto:info@creative-biomart.com)  Fax: 1-631-938-8127

 45-1 Ramsey Road, Shirley, NY 11967, USA

**Shipping**

They are shipped out with dry ice/blue ice unless customers require otherwise.

**GENE INFORMATION**
**Gene Name**

CD22 CD22 molecule [ Homo sapiens (human) ]

**Official Symbol**

CD22

**Synonyms**

CD22; CD22 molecule; CD22 antigen; B-cell receptor CD22; sialic acid binding Ig like lectin 2; SIGLEC 2; SIGLEC2; BL-CAM; T-cell surface antigen Leu-14; B-lymphocyte cell adhesion molecule; sialic acid binding Ig-like lectin 2; sialic acid-binding Ig-like lectin 2; SIGLEC-2; FLJ22814; MGC130020;

**Gene ID**

933

**mRNA Refseq**

NM\_001185099

**Protein Refseq**

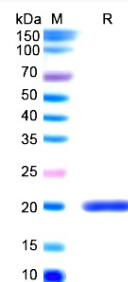
NP\_001172028

**MIM**

107266

**UniProt ID**

P20273

**SDS-PAGE**


 Tel: 1-631-559-9269 1-516-512-3133

 Email: [info@creative-biomart.com](mailto:info@creative-biomart.com)  Fax: 1-631-938-8127

 45-1 Ramsey Road, Shirley, NY 11967, USA