

# Recombinant Human CD22 Protein, MYC/DDK-tagged, C13 and N15-labeled

**Cat. No.** CD22-158H    **Lot. No.** (See product label)

## SPECIFICATION

<b>Product Overview</b>	CD22 MS Standard C13 and N15-labeled recombinant protein (NP_001762) with a C-terminal MYC/DDK tag, was expressed in HEK293 cells.
<b>Species</b>	Human
<b>Source</b>	HEK293
<b>Description</b>	Mediates B-cell B-cell interactions. May be involved in the localization of B-cells in lymphoid tissues. Binds sialylated glycoproteins; one of which is CD45. Preferentially binds to alpha-2,6-linked sialic acid. The sialic acid recognition site can be masked by cis interactions with sialic acids on the same cell surface. Upon ligand induced tyrosine phosphorylation in the immune response seems to be involved in regulation of B-cell antigen receptor signaling. Plays a role in positive regulation through interaction with Src family tyrosine kinases and may also act as an inhibitory receptor by recruiting cytoplasmic phosphatases via their SH2 domains that block signal transduction through dephosphorylation of signaling molecules.
<b>Molecular Mass</b>	95.8 kDa
<b>AA Sequence</b>	MHLLGPWLLLLLVLEYLAFSDSSKWWFEHPETLYAWEGACVWIPCTYRALDGDLESFI LFHNPEYNKNTSKFDGTRLYESTKDGKVPSEQKRVQFLGDKNKNCTLSIHPVHLND SGQLGLRMEKTEKWMERIHNLNVSERPFPPHIQLPPEIQESQEVTLTCLLNFSYCYG PIQLQWLLEGVPMRQAAVTSTSLTIKSVFTRSELKFSPQWSHHGKIVTCQLQDADGK

 Tel: 1-631-559-9269    1-516-512-3133

 Email: [info@creative-biomart.com](mailto:info@creative-biomart.com)     Fax: 1-631-938-8127

 45-1 Ramsey Road, Shirley, NY 11967, USA

FLSNDTVQLNVKHTPKLEIKVTPSDAIVREGDSVTMTCEVSSSNPEYTTVSWLKDGT  
 SLKKQNTFTLNLREVTKDQSGKYCCQVSNVDPGRSEEVFLQVQYAPEPSTVQILH  
 SPAVEGSQVEFLCMSLANPLPTNYTWYHNGKEMQGRTEEKVHIPKILPWHAGTYSC  
 VAENILGTGQRGPGAELDVQYPPKKVTTVIQNPMPPIREGDTVTLSCNYNSSSNPSVTR  
 YEWKPHGAWEEPVLGVLKIQNVGWDNTTIACAACNSWCSWASPVALNVQYAPRDV  
 RVRKIKPLSEIHSNGNSVSLQCDFSSSHPKVEVQFFWEKNGRLLGKESQLNFDSISPED  
 AGSYSCWVNNSIGQTASKAWTLEVLYAPRRLRVSMSPGDQVMGKSATLTCESDA  
 NPPVSHYTWFDWNNQSLPYHSQKLRLEPVKVQHSGAYWCQGTNSVKGGRSPLST  
 LTVYYSPETIGRRVAVGLGSCLAAILAICGLKLQRRWKRTQSQQGLQENSSGQSFFV  
 RNKKVRRAPLSEGPLSLGYNPMMEDGISYTTLRFPENIPRTGDAESSEMQRPPP  
 DCDDTVTYSALHKRQVGDYENVIPDFPEDEGIHYSELIQFGVGERPQAQENVYVIL  
 KHTRTRPLEQKLISEEDLAANDILDYKDDDDKV

**Purity** > 80% as determined by SDS-PAGE and Coomassie blue staining

**Stability** Stable for 3 months from receipt of products under proper storage and handling conditions.

**Storage** Store at -80 centigrade. Avoid repeated freeze-thaw cycles.

**Concentration** 50 µg/mL as determined by BCA

**Storage Buffer** 100 mM glycine, 25 mM Tris-HCl, pH 7.3.

## GENE INFORMATION

**Gene Name** CD22 CD22 molecule [ Homo sapiens (human) ]

**Official Symbol** CD22

**Synonyms** CD22; CD22 molecule; SIGLEC-2; SIGLEC2; B-cell receptor CD22; B-lymphocyte

 Tel: 1-631-559-9269 1-516-512-3133

 Email: [info@creative-biomart.com](mailto:info@creative-biomart.com)  Fax: 1-631-938-8127

 45-1 Ramsey Road, Shirley, NY 11967, USA

cell adhesion molecule; BL-CAM; CD22 antigen; T-cell surface antigen Leu-14; sialic acid-binding Ig-like lectin 2

**Gene ID** 933

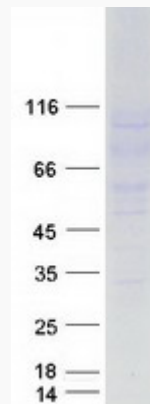
**mRNA Refseq** NM\_001771

**Protein Refseq** NP\_001762

**MIM** 107266

**UniProt ID** P20273

**SDS-PAGE**



 Tel: 1-631-559-9269 1-516-512-3133

 Email: [info@creative-biomart.com](mailto:info@creative-biomart.com)  Fax: 1-631-938-8127

 45-1 Ramsey Road, Shirley, NY 11967, USA