

## Recombinant Human CD22 Protein, C-His-tagged

Cat. No. CD22-181H Lot. No. (See product label)

### SPECIFICATION

<b>Product Overview</b>	Recombinant Human CD22 Protein with C-His tag was expressed in E. coli.
<b>Species</b>	Human
<b>Source</b>	E.coli
<b>Description</b>	<p>CD22 (also known as siglec-2) is a member of the sialic acid-binding immunoglobulin-type lectin (Siglec) family of immunomodulatory receptors. CD22 can bind to its ligand <math>\alpha</math> 2,6-linked sialic acid on different cells (trans interaction) as well as on the same cells (cis interaction). CD22 is predominantly expressed on B cells and functions as an inhibitory co-receptor for the B cell receptor (BCR). After BCR ligation, the tyrosine kinase Lyn is activated and phosphorylates two distal of the four ITIM motifs in the intracellular carboxy-terminal region of CD22, which then recruit tyrosine phosphatases, including SHP-1, to the plasma membrane, and in turn, they get tyrosine-phosphorylated and activated to damp the signaling pathways initiated by BCR ligation. CD22 has been actively pursued as a therapeutic target for autoimmune diseases. Due to almost exclusive expression on B cells, it is also actively pursued as a therapeutic target for multiple B cell malignancies.</p>
<b>Molecular Mass</b>	~74 kDa
<b>AA Sequence</b>	DSSKWWFEHPETLYAWEGACVWIPCTYRALDGDLESFILFHNPEYKNKNTSKFDGTR LYESTKDGKVPSEQKRVQFLGDKNKNCTLSIHPVHLNDSGQLGLRMESKTEKWME RIHLNVSERPFPPHIQLPPEIQESQEVTLTCLLNFSYGYPIQLQWLLEGVPMRQAAV

 Tel: 1-631-559-9269 1-516-512-3133

 Email: [info@creative-biomart.com](mailto:info@creative-biomart.com)  Fax: 1-631-938-8127

 45-1 Ramsey Road, Shirley, NY 11967, USA

TSTSLTIKSVFTRSELKFSPQWSHHGKIVTCQLQDADGKFLSNDTVQLNVKHTPKLEI  
 KVTPSDAIVREGDSVTMTCEVSSSNPEYTTVSWLKDGTSLKKQNTFTLNLREVTKD  
 QSGKYCCQVSNDVGPGRSEEVFLQVQYAPEPSTVQILHSPAVEGSQVEFLCMSLA  
 NPLPTNYTWYHNGKEMQGRTEEKVHIPKILPWHAGTYSCVAENILGTGQRGPGAEL  
 DVQYPPKKVTTVIQNPMPPIREGDTVTLSCNYNSSNPSVTRYEWKPHGAWEEP  
 SLGV LKIQNVGWDNTTIACAACNSWCSWASPVALNVQYAPRDVVRKIKPLSEIHSGNSV  
 SLQCDFSSSHPKVQFFWEKNGRLLGKESQLNFDSISPEDAGSYSCWVNNSIGQTA  
 SKAWTLEVLYAPRRLRVSMSPGDQVMEGKSATLTCESDANPPVSHYTWFDWNNQ  
 SLPYHSQKLRLEPVKVQHSGAYWCQGTNSVGKGRSPLSTLTVYYSPETIGRR

**Purity**

Transferred into competent cells and the supernatant was purified by NI column affinity chromatography and the purity is > 85% (by SDS-PAGE).

**Notes**

For research use only, not for use in diagnostic procedure.

**Storage**

Store at 4 centigrade short term. Aliquot and store at -20 centigrade long term. Avoid freeze-thaw cycles.

**Concentration**

≥0.5 mg/mL

**Storage Buffer**

PBS, 4M Urea, pH7.4

## GENE INFORMATION

**Gene Name**

CD22 CD22 molecule [ Homo sapiens (human) ]

**Official Symbol**

CD22

**Synonyms**

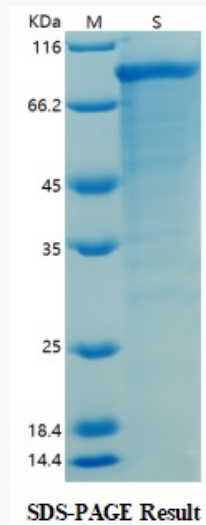
CD22; CD22 molecule; CD22 antigen; B-cell receptor CD22; sialic acid binding Ig like lectin 2; SIGLEC 2; SIGLEC2; BL-CAM; T-cell surface antigen Leu-14; B-lymphocyte cell adhesion molecule; sialic acid binding Ig-like lectin 2; sialic acid-binding Ig-like

 Tel: 1-631-559-9269 1-516-512-3133

 Email: [info@creative-biomart.com](mailto:info@creative-biomart.com)  Fax: 1-631-938-8127

 45-1 Ramsey Road, Shirley, NY 11967, USA

lectin 2; SIGLEC-2; FLJ22814; MGC130020;

**Gene ID** 933**mRNA Refseq** NM\_001185099**Protein Refseq** NP\_001172028**MIM** 107266**UniProt ID** P20273**SDS-PAGE** Tel: 1-631-559-9269 1-516-512-3133 Email: [info@creative-biomart.com](mailto:info@creative-biomart.com)  Fax: 1-631-938-8127 45-1 Ramsey Road, Shirley, NY 11967, USA