

Active Recombinant Human CD22 Protein, Fc-tagged, Atto 488 conjugated

Cat. No. CD22-23H **Lot. No.** (See product label)

SPECIFICATION

Product Overview	Recombinant human Atto 488 conjugated Siglec-2/CD22 (Asp20-Arg687) protein with a human IgG1 (Pro100-Lys330) Fc tag at C-terminus was expressed in mouse myeloma cell line.
Species	Human
Source	NS0
Description	Predicted to enable CD4 receptor binding activity; protein phosphatase binding activity; and sialic acid binding activity. Involved in B cell activation; negative regulation of B cell receptor signaling pathway; and regulation of endocytosis. Located in early endosome and recycling endosome.
Form	Disulfide-linked homodimer Labeled with Atto 488 via amines Excitation Wavelength: 501 nm Emission Wavelength: 523 nm
Bio-activity	Measured by flow cytometry for its ability to bind anti-Human Siglec-2/CD22 Monoclonal Antibody conjugated fluorescent beads.
Molecular Mass	101.9 kDa
N-terminal Sequence	Asp20

 Tel: 1-631-559-9269 1-516-512-3133

 Email: info@creative-biomart.com  Fax: 1-631-938-8127

 45-1 Ramsey Road, Shirley, NY 11967, USA

Analysis	
Endotoxin	<1.0 EU/μg of the protein by the LAL method.
Purity	>80%, by SDS-PAGE visualized with Silver Staining and quantitative densitometry by Coomassie® Blue Staining.
Storage	Protect from light. Use a manual defrost freezer and avoid repeated freeze-thaw cycles. 6 months from date of receipt, -20 to -70 centigrade as supplied. 1 month, 2 to 8 centigrade under sterile conditions after opening. 3 months, -20 to -70 centigrade under sterile conditions after opening.
Storage Buffer	Supplied as a 0.2 μm filtered solution in PBS with BSA as a carrier protein.
Shipping	The product is shipped with dry ice or equivalent.
Conjugation	Alexa Fluor 488

GENE INFORMATION

Gene Name	CD22 CD22 molecule [Homo sapiens (human)]
Official Symbol	CD22
Synonyms	CD22; CD22 molecule; SIGLEC2; SIGLEC-2; B-cell receptor CD22; B-lymphocyte cell adhesion molecule; BL-CAM; CD22 antigen; T-cell surface antigen Leu-14; sialic acid-binding Ig-like lectin 2
Gene ID	933

 Tel: 1-631-559-9269 1-516-512-3133

 Email: info@creative-biomart.com  Fax: 1-631-938-8127

 45-1 Ramsey Road, Shirley, NY 11967, USA

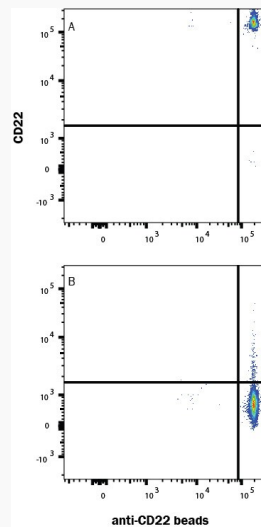
mRNA Refseq [NM_001771](#)

Protein Refseq [NP_001762](#)

MIM [107266](#)

UniProt ID [P20273](#)

FC

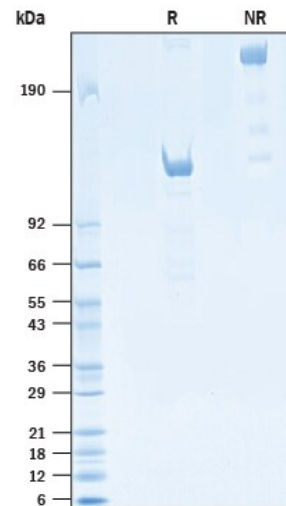


Fluorescent beads conjugated to anti-Human Siglec 2/CD22 Monoclonal Antibody were stained with (A) Recombinant Human Siglec 2/CD22 Protein, Atto 488 Conjugate or (B) unstained.

 Tel: 1-631-559-9269 1-516-512-3133

 Email: info@creative-biomart.com  Fax: 1-631-938-8127

 45-1 Ramsey Road, Shirley, NY 11967, USA

SDS-PAGE

2 µg/lane of Recombinant Human Siglec-2/CD22 Protein, Atto 488 Conjugate was resolved with SDS-PAGE under reducing (R) and non-reducing (NR) conditions and visualized by Coomassie® Blue staining, showing bands at 114-126 kDa and 228-252 kDa, respectively.

 Tel: 1-631-559-9269 1-516-512-3133

 Email: info@creative-biomart.com  Fax: 1-631-938-8127

 45-1 Ramsey Road, Shirley, NY 11967, USA