

Recombinant Human CD22 protein, His-Avi-tagged

Cat. No. CD22-273H Lot. No. (See product label)

SPECIFICATION

Product Overview	Human Siglec-2/CD22 is expressed from mammalian with a His tag and Avi Tag at the C-terminal. It contains Asp20-Arg687.
Species	Human
Source	HEK293
ProteinLength	It contains Asp20-Arg687.
Description	CD22 is a member of the siglec family of sialic acid binding lectins (sialoadhesin, CD33 and MAG) and, like other family members, is predicted to have an unusual disulphide bond between β strands B and E in domain 1, and a disulphide bond between domains 1 and 22.
Form	Supplied as 0.22um filtered solution in PBS (pH 7.4).
Molecular Mass	The protein has a predicted MW of 78.1 kDa. Due to glycosylation, the protein migrates to 100-115KDa based on Bis-Tris PAGE result.
Endotoxin	Less than 0.05EU per ug by the LAL method.
Purity	> 95% as determined by Bis-Tris PAGE; > 95% as determined by HPLC
Storage	The product should be stored at -70°C. Please do not repeated freeze-thaw cycles.

 Tel: 1-631-559-9269 1-516-512-3133

 Email: info@creative-biomart.com  Fax: 1-631-938-8127

 45-1 Ramsey Road, Shirley, NY 11967, USA

Reconstitution It is recommended that sterile water be added to the vial to prepare a stock solution of 0.2 ug/ul. Centrifuge the vial at 4°C before opening to recover the entire contents.

GENE INFORMATION

Gene Name [CD22 CD22 molecule \[Homo sapiens \]](#)

Official Symbol [CD22](#)

Synonyms CD22 molecule; CD22; Siglec2; Siglec-2; B-cell receptor CD22; BL-CAM; B-lymphocyte cell adhesion molecule; CD22 antigenMGC130020; sialic acid binding Ig-like lectin 2; Sialic acid-binding Ig-like lectin 2; SIGLEC2FLJ22814; T-cell surface antigen Leu-14

Gene ID [933](#)

mRNA Refseq [NM_001185099](#)

Protein Refseq [NP_001172028](#)

MIM [107266](#)

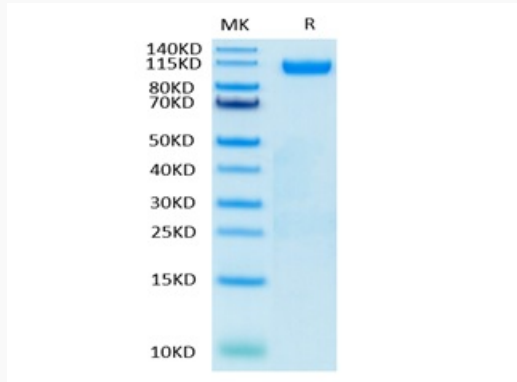
UniProt ID [P20273](#)

 Tel: 1-631-559-9269 1-516-512-3133

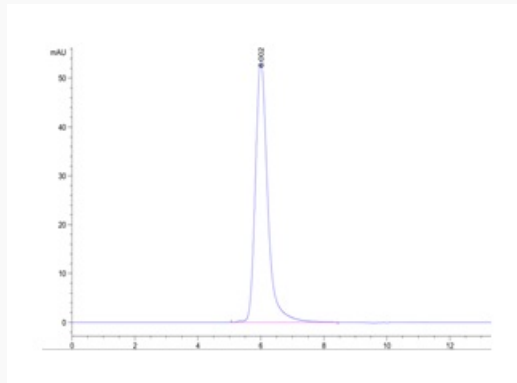
 Email: info@creative-biomart.com  Fax: 1-631-938-8127

 45-1 Ramsey Road, Shirley, NY 11967, USA

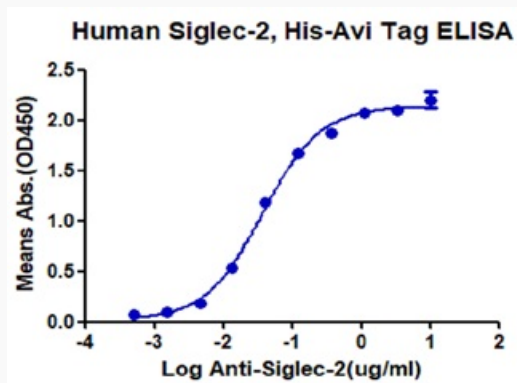
Tris-Bis PAGE




HPLC data




ELISA data



 Tel: 1-631-559-9269 1-516-512-3133

 Email: info@creative-biomart.com  Fax: 1-631-938-8127

 45-1 Ramsey Road, Shirley, NY 11967, USA