

Active Recombinant Human CD22 Protein, Fc & Avi-tagged, Biotinylated

Cat. No. CD22-334H **Lot. No.** (See product label)

SPECIFICATION

Product Overview	Recombinant Human CD22 Protein, Fc & Avi-tagged, Biotinylated is expressed from human 293 cells (HEK293). It contains AA Asp 20 - Arg 687 (Accession # P20273-1). Predicted N-terminus: Asp 20. This protein carries a human IgG1 Fc tag at the C-terminus, followed by a Avi tag. The protein has a calculated MW of 103.9 kDa. The protein migrates as 115-120 kDa under reducing (R) condition (SDS-PAGE) due to glycosylation. The biotin to protein ratio is 0.5-1 as determined by the HABA assay.
Species	Human
Source	HEK293
ProteinLength	Asp 20 - Arg 687
Form	Lyophilized from 0.22 µm filtered solution in 50 mM Tris, 100 mM Glycine, pH7.5. Normally trehalose is added as protectant before lyophilization.
Bio-activity	Immobilized Anti-Human CD22 MAb at 0.5 µg/mL (100 µL/well) can bind Recombinant Human CD22 Protein, Fc & Avi-tagged, Biotinylated with a linear range of 1-16 ng/mL (QC tested).
Molecular Mass	103.9 kDa
Endotoxin	Less than 1.0 EU per µg by the LAL method.

 Tel: 1-631-559-9269 1-516-512-3133

 Email: info@creative-biomart.com  Fax: 1-631-938-8127

 45-1 Ramsey Road, Shirley, NY 11967, USA

Purity	>95% as determined by SDS-PAGE.
Notes	Please avoid repeated freeze-thaw cycles.
Stability	No activity loss is observed after storage at: 4-8 centigrade for 12 months in lyophilized state; -70 centigrade for 3 months under sterile conditions after reconstitution.
Storage	For long term storage, the product should be stored at lyophilized state at -20 centigrade or lower.
Reconstitution	It is recommended that sterile water be added to the vial to prepare a stock solution of 0.2 mg/ml. Centrifuge the vial at 4 centigrade before opening to recover the entire contents.
Conjugation	Biotin
GENE INFORMATION	
Gene Name	CD22 CD22 molecule [Homo sapiens]
Official Symbol	CD22
Synonyms	CD22; CD22 molecule; CD22 antigen; B-cell receptor CD22; SIGLEC 2; SIGLEC2; BL-CAM; SIGLEC-2; FLJ22814; MGC130020;
Gene ID	933
mRNA Refseq	NM_001185099
Protein Refseq	NP_001172028

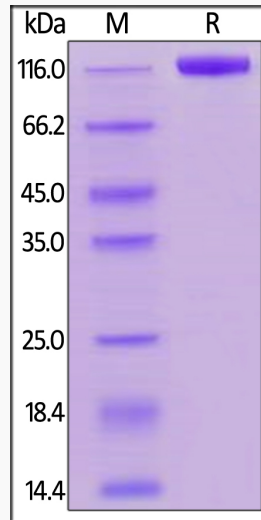
 Tel: 1-631-559-9269 1-516-512-3133

 Email: info@creative-biomart.com  Fax: 1-631-938-8127

 45-1 Ramsey Road, Shirley, NY 11967, USA

MIM 107266

UniProt ID P20273



 Tel: 1-631-559-9269 1-516-512-3133

 Email: info@creative-biomart.com  Fax: 1-631-938-8127

 45-1 Ramsey Road, Shirley, NY 11967, USA