

Active Recombinant Human CD22 Protein (Asp 20 - Arg 687), His-tagged, FITC-Labeled

Cat. No. CD22-335H **Lot. No.** (See product label)

SPECIFICATION

Product Overview	Recombinant Human CD22 Protein, His-tagged, FITC-Labeled is expressed from human HEK293 cells. It contains AA Asp 20 - Arg 687 (Accession # P20273-1). It is the FITC labeled form of Human Siglec-2 (Cat. No. CD2-H52H8). Predicted N-terminus: Asp 20. This protein carries a polyhistidine tag at the C-terminus. The protein has a calculated MW of 77.0 kDa. The protein migrates as 100-115 kDa under reducing (R) condition (SDS-PAGE) due to glycosylation. Conjugate (FITC): Excitation source: 488 nm spectral line, argon-ion laser; Excitation Wavelength: 488 nm; Emission Wavelength: 535 nm. The FITC to protein molar ratio is 1.5-3.5.
Species	Human
Source	HEK293
ProteinLength	Asp 20 - Arg 687
Form	Lyophilized from 0.22 µm filtered solution in PBS, pH7.4. Normally trehalose is added as protectant before lyophilization.
Bio-activity	Immobilized Anti-Human CD22 MAb at 10 µg/mL (100 µL/well) can bind FITC-Labeled Human Siglec-2 (Cat. No. SI2-HF2H6) with a linear range of 0.625-10 µg/mL (Ex.488 nm/Em.535 nm) (QC tested).
Molecular Mass	77.0 kDa

 Tel: 1-631-559-9269 1-516-512-3133

 Email: info@creative-biomart.com  Fax: 1-631-938-8127

 45-1 Ramsey Road, Shirley, NY 11967, USA

Endotoxin	Less than 1.0 EU per µg by the LAL method.
Purity	>95% as determined by SDS-PAGE.
Notes	Please avoid repeated freeze-thaw cycles.
Stability	No activity loss is observed after storage at: 4-8 centigrade for 12 months in lyophilized state; -70 centigrade for 3 months under sterile conditions after reconstitution.
Storage	For long term storage, the product should be stored at lyophilized state at -20 centigrade or lower.
Reconstitution	It is recommended that sterile water be added to the vial to prepare a stock solution of 0.2 mg/ml. Centrifuge the vial at 4 centigrade before opening to recover the entire contents.
Conjugation	FITC

GENE INFORMATION

Gene Name	CD22 CD22 molecule [Homo sapiens]
Official Symbol	CD22
Synonyms	CD22; CD22 molecule; CD22 antigen; B-cell receptor CD22; SIGLEC 2; SIGLEC2; BL-CAM; SIGLEC-2; FLJ22814; MGC130020;
Gene ID	933
mRNA Refseq	NM_001185099

 Tel: 1-631-559-9269 1-516-512-3133

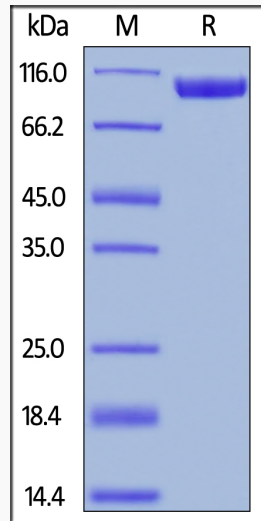
 Email: info@creative-biomart.com  Fax: 1-631-938-8127

 45-1 Ramsey Road, Shirley, NY 11967, USA

Protein Refseq NP_001172028

MIM 107266

UniProt ID P20273



 Tel: 1-631-559-9269 1-516-512-3133

 Email: info@creative-biomart.com  Fax: 1-631-938-8127

 45-1 Ramsey Road, Shirley, NY 11967, USA