

Recombinant Mouse CD22 protein, His-tagged

Cat. No. CD22-336M Lot. No. (See product label)

SPECIFICATION

Product Overview	Recombinant Mouse CD22 protein (Ser22-Arg702), fused to His tag at C-terminus, was expressed in human 293 cells (HEK293).
Species	Mouse
Source	HEK293
ProteinLength	681
Description	B-cell receptor CD22 is also known as Sialic acid-binding Ig-like lectin 2 (Siglec-2), B-lymphocyte cell adhesion molecule (BL-CAM), T-cell surface antigen Leu-14, which belongs to the immunoglobulin superfamily and SIGLEC (sialic acid binding Ig-like lectin) family. CD22 mediates B-cell B-cell interactions, and may be involved in the localization of B-cells in lymphoid tissues. Siglec-2/CD22 binds sialylated glycoproteins, one of which is CD45. Siglec2/CD22 plays a role in positive regulation through interaction with Src family tyrosine kinases and may also act as an inhibitory receptor by recruiting cytoplasmic phosphatases via their SH2 domains that block signal transduction through dephosphorylation of signaling molecules.
Form	Lyophilized from 0.22 um filtered solution in PBS, pH7.4, 10% trehalose.
Molecular Mass	The protein has a calculated MW of 78.3 kDa. The protein migrates as 100 kDa under reducing (R) condition (SDS-PAGE) due to glycosylation.
Endotoxin	Less than 1.0 EU per ug by the LAL method.

 Tel: 1-631-559-9269 1-516-512-3133

 Email: info@creative-biomart.com  Fax: 1-631-938-8127

 45-1 Ramsey Road, Shirley, NY 11967, USA

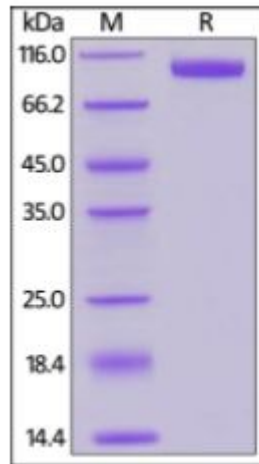
Purity	>95% as determined by SDS-PAGE.
Storage	<p>For long term storage, the product should be stored at lyophilized state at -20 centigrade or lower.</p> <p>Please avoid repeated freeze-thaw cycles.</p> <p>This product is stable after storage at:</p> <p>-20 centigrade to -70 centigrade for 12 months in lyophilized state; -70 centigrade for 3 months under sterile conditions after reconstitution.</p>
Reconstitution	It is recommended that sterile water be added to the vial to prepare a stock solution of 0.2 ug/ul. Centrifuge the vial at 4°C before opening to recover the entire contents.
GENE INFORMATION	
Gene Name	CD22
Official Symbol	CD22
Synonyms	CD22; CD22 antigen; B-cell receptor CD22; BL-CAM; siglec-2; T-cell surface antigen Leu-14; B-lymphocyte cell adhesion molecule; sialic acid-binding Ig-like lectin 2; Lyb8; Lyb-8; A530093D23
Gene ID	12483
mRNA Refseq	NM_001043317
Protein Refseq	NP_001036782
UniProt ID	P35329

 Tel: 1-631-559-9269 1-516-512-3133

 Email: info@creative-biomart.com  Fax: 1-631-938-8127

 45-1 Ramsey Road, Shirley, NY 11967, USA

**SDS-PAGE of CD22-
336M**



Mouse Siglec-2 on SDS-PAGE under reducing (R) condition. The gel was stained overnight with Coomassie Blue. The purity of the protein is greater than 95%.

 Tel: 1-631-559-9269 1-516-512-3133

 Email: info@creative-biomart.com  Fax: 1-631-938-8127

 45-1 Ramsey Road, Shirley, NY 11967, USA