

Recombinant Human CD22 Protein (Asp20-Arg687), C-hFc and 6xHis-tagged

Cat. No. CD22-496H Lot. No. (See product label)

SPECIFICATION

Product Overview	Recombinant Human CD22 Protein (Asp20-Arg687) with C-hFc and 6xHis tag was expressed in HEK293.
Species	Human
Source	HEK293
ProteinLength	Asp20-Arg687
Description	<p>B-cell receptor CD22 is also known as Sialic acid-binding Ig-like lectin 2 (Siglec-2), B-lymphocyte cell adhesion molecule (BL-CAM), T-cell surface antigen Leu-14, which belongs to the immunoglobulin superfamily and SIGLEC (sialic acid binding Ig-like lectin) family. CD22 mediates B-cell B-cell interactions, and may be involved in the localization of B-cells in lymphoid tissues. Siglec-2 / CD22 binds sialylated glycoproteins, one of which is CD45. Siglec2 / CD22 plays a role in positive regulation through interaction with Src family tyrosine kinases and may also act as an inhibitory receptor by recruiting cytoplasmic phosphatases via their SH2 domains that block signal transduction through dephosphorylation of signaling molecules.</p>
Form	Lyophilized
Molecular Mass	130-135 kDa
Purity	> 95% as determined by SDS-PAGE and Coomassie blue staining.

 Tel: 1-631-559-9269 1-516-512-3133

 Email: info@creative-biomart.com  Fax: 1-631-938-8127

 45-1 Ramsey Road, Shirley, NY 11967, USA

Storage Store at -80 centigrade for 12 months (Avoid repeated freezing and thawing)

Storage Buffer Lyophilized from sterile PBS, pH 7.4. Normally 5 % - 12 % trehalose is added as protectants before lyophilization.

GENE INFORMATION

Gene Name CD22 CD22 molecule [Homo sapiens (human)]

Official Symbol CD22

Synonyms CD22; CD22 molecule; CD22 antigen; B-cell receptor CD22; sialic acid binding Ig like lectin 2; SIGLEC 2; SIGLEC2; BL-CAM; T-cell surface antigen Leu-14; B-lymphocyte cell adhesion molecule; sialic acid binding Ig-like lectin 2; sialic acid-binding Ig-like lectin 2; SIGLEC-2; FLJ22814; MGC130020;

Gene ID 933

mRNA Refseq NM_001185099

Protein Refseq NP_001172028

MIM 107266

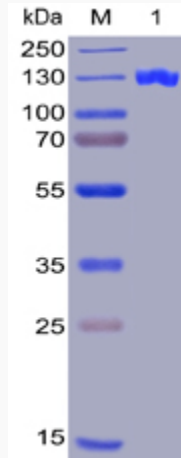
UniProt ID P20273

 Tel: 1-631-559-9269 1-516-512-3133

 Email: info@creative-biomart.com  Fax: 1-631-938-8127

 45-1 Ramsey Road, Shirley, NY 11967, USA

SDS-PAGE



 Tel: 1-631-559-9269 1-516-512-3133

 Email: info@creative-biomart.com  Fax: 1-631-938-8127

 45-1 Ramsey Road, Shirley, NY 11967, USA